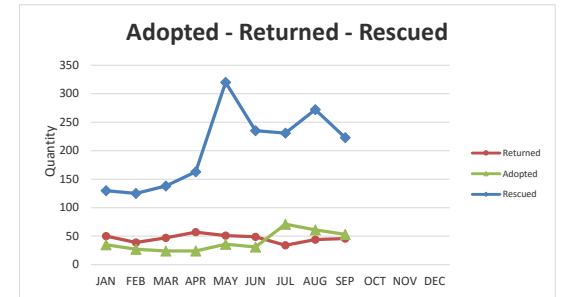


# COLUMBUS, GA Animal Care Control Center

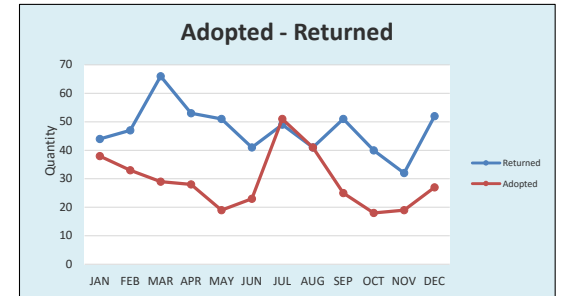
Last Modified: 10/17/2017

2017	INTAKE					RTO		ADOPTED			RESCUED			%		HUMANELY EUTHANIZED				%		
	DOG	CAT	CFRC	BF	T	DOG	CAT	T	DOG	CAT	T	DOG	CAT	T	CFRC	GT	PLACED	DOG	CAT	CFRC	T	EUTHANIZED
JAN	223	54	0	0	277	49	1	50	30	5	35	102	28	130	0	215	78%	39	8	0	47	17%
FEB	206	25	0	0	231	38	1	39	27	0	27	112	13	125	0	191	83%	35	14	0	49	21%
MAR	231	47	0	0	278	43	4	47	23	1	24	104	34	138	0	209	75%	51	7	0	58	21%
APR	229	86	0	0	315	53	4	57	24	0	24	89	74	163	0	244	77%	53	5	0	58	18%
MAY	241	267	0	0	508	50	1	51	27	9	36	104	216	320	0	407	80%	74	10	0	84	17%
JUN	291	179	0	0	470	47	2	49	31	0	31	109	126	235	0	315	67%	97	18	0	115	24%
JUL	283	123	0	0	406	33	1	34	60	11	71	119	112	231	0	336	83%	68	18	0	86	21%
AUG	266	150	0	0	416	41	3	44	54	7	61	134	138	272	0	377	91%	36	10	0	46	11%
SEP	238	138	0	0	376	46	0	46	42	11	53	115	108	223	0	322	86%	35	7	0	42	11%
OCT					0			#N/A			#N/A			#N/A		#N/A	0%					0%
NOV					0			#N/A			#N/A			#N/A		#N/A	0%					0%
DEC					0			#N/A			#N/A			#N/A		#N/A	0%					0%
YTD	2208	1069	0	0	3277	400	17	417	318	44	362	988	849	1837	0	2616	74%	488	97	0	585	18%



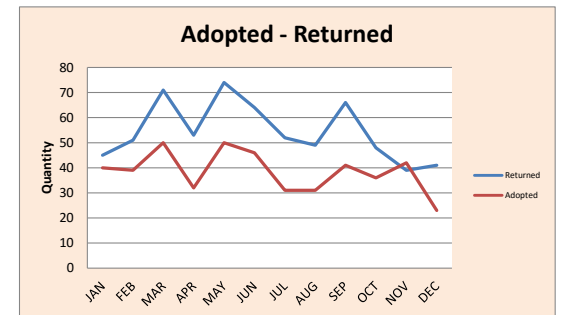
\*\*\*NOTE: BEST FRIENDS FERAL CAT PROGRAM September 2017 TOTAL ██████████  
 BEST FRIENDS FERAL CAT PROGRAM TOTAL YTD **5785**  
 September 2017 Walk-In Visitors to ACCC 711 YTD Total 4708.  
 \*\*\*\*Best Friends Numbers not Available at this time for September 2017

2016	INTAKE					RTO		ADOPTED			RESCUED			%		HUMANELY EUTHANIZED				%		
	DOG	CAT	CFRC	BF	T	DOG	CAT	T	DOG	CAT	T	DOG	CAT	T	CFRC	GT	PLACED	DOG	CAT	CFRC	T	EUTHANIZED
JAN	227	59	0	0	286	43	1	44	38	0	38	102	40	142	0	224	78%	52	19	0	71	25%
FEB	209	27	0	0	236	43	4	47	31	2	33	71	10	81	0	161	68%	50	10	0	60	25%
MAR	252	36	19	0	307	64	2	66	29	0	29	125	33	158	0	253	82%	42	3	0	45	15%
APR	204	147	28	0	379	53	0	53	28	0	28	113	131	244	0	325	86%	20	9	0	29	8%
MAY	247	221	31	0	499	51	0	51	19	0	19	120	200	320	0	390	78%	39	25	0	64	13%
JUN	225	200	0	0	425	41	0	41	19	4	23	93	156	249	0	313	74%	75	29	0	104	24%
JUL	264	207	0	0	471	48	1	49	38	13	51	107	135	242	0	342	73%	56	42	0	98	21%
AUG	259	207	0	0	466	41	0	41	37	4	41	122	148	270	0	352	76%	63	50	0	113	24%
SEP	254	145	0	0	399	39	12	51	16	9	25	99	113	212	0	288	72%	92	27	0	119	30%
OCT	184	73	0	0	257	38	2	40	16	2	18	85	48	133	0	191	74%	52	25	0	77	30%
NOV	200	67	0	0	267	31	1	32	17	2	19	118	57	175	0	226	85%	44	10	0	54	20%
DEC	226	38	0	0	264	49	3	52	25	2	27	103	24	127	0	206	78%	31	6	0	37	14%
YTD	2751	1427	78	0	4256	541	26	567	313	38	351	1258	1095	2353	0	3271	74%	616	255	0	871	20%



\*\*\*NOTE: BEST FRIENDS FERAL CAT PROGRAM DEC 2016 TOTAL ██████████  
 BEST FRIENDS FERAL CAT PROGRAM TOTAL YTD **4387**  
 December 2016 Walk-In Visitors to ACCC 594 YTD Total = 6214.  
 \*\*\*\*Best Friends Numbers not Available at this time for December 2016

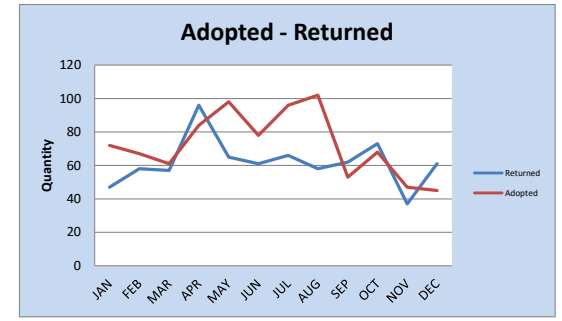
2015	INTAKE					RTO		ADOPTED			RESCUED			%		HUMANELY EUTHANIZED				%		
	DOG	CAT	CFRC	BF	T	DOG	CAT	T	DOG	CAT	T	DOG	CAT	T	CFRC	GT	PLACED	DOG	CAT	CFRC	T	EUTHANIZED
JAN	328	54	0	0	382	45	0	45	37	3	40	131	41	172	0	257	67%	111	6	0	117	31%
FEB	291	14	27	0	332	51	0	51	39	0	39	136	17	153	0	243	73%	69	3	0	72	22%
MAR	286	51	0	0	337	70	1	71	50	0	50	84	46	130	0	251	74%	75	6	0	81	24%
APR	288	120	0	0	408	51	2	53	31	1	32	131	91	222	0	307	75%	71	15	0	86	21%
MAY	317	285	0	0	602	71	3	74	37	13	50	90	218	308	0	432	72%	111	28	0	139	23%
JUN	322	313	0	0	635	64	0	64	31	15	46	102	236	338	0	448	71%	127	80	0	207	33%
JUL	271	182	0	0	453	51	1	52	30	1	31	114	129	243	0	326	72%	73	47	0	120	26%
AUG	284	138	0	0	422	49	0	49	29	2	31	99	108	207	0	287	68%	111	27	0	138	33%
SEP	269	146	0	0	415	66	0	66	37	4	41	112	130	242	0	349	84%	71	18	0	89	21%
OCT	243	111	0	0	354	47	1	48	31	5	36	107	89	196	0	280	79%	54	13	0	67	19%
NOV	237	112	0	0	349	37	2	39	33	9	42	90	73	163	0	244	70%	82	28	0	110	32%
DEC	205	65	0	0	270	38	3	41	23	0	23	99	47	146	0	210	78%	34	15	0	49	18%
YTD	3341	1591	27	0	4959	640	13	653	408	53	461	1295	1225	2520	0	3634	73%	989	286	0	1275	26%



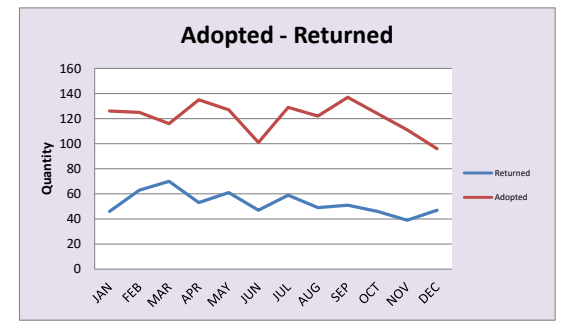
\*\*\*NOTE: BEST FRIENDS FERAL CAT PROGRAM DEC 2015 TOTAL ██████████  
 BEST FRIENDS FERAL CAT PROGRAM TOTAL YTD **2789**  
 DECEMBER 2015 Walk-In Visitors to ACCC 723 YTD Total = 7812.  
 \*\*\*\*Best Friends Numbers not Available at this time for Dec. 2015

COLUMBUS, GA  
Animal Care Control Center

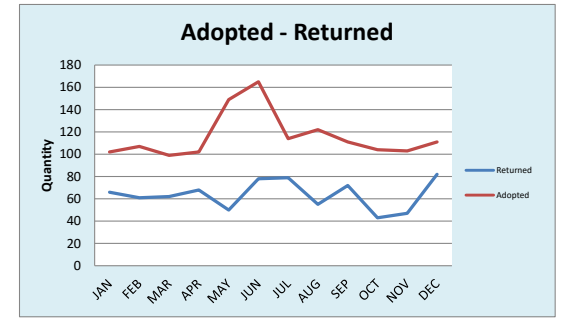
2014 INTAKE					RTO					ADOPTED				RESCUED				HUMANELY EUTHANIZED				
DOG	CAT	CFRC	BF	T	DOG	CAT	T	DOG	CAT	T	DOG	CAT	T	CFRC	GT	PLACED	DOG	CAT	CFRC	T	EUTHANIZED	
JAN	330	112	54	496	44	3	47	66	6	72	131	31	162	138	419	84%	89	23	2	112	23%	
FEB	263	160	57	480	57	1	58	64	3	67	66	43	109	145	379	79%	76	24	2	100	21%	
MAR	327	147	13	487	54	3	57	57	4	61	106	59	165	82	365	75%	95	32	0	127	26%	
APR	340	261	55	656	91	5	96	77	7	84	74	138	212	112	504	77%	107	21	0	128	20%	
MAY	359	393	43	795	57	8	65	76	22	98	94	190	284	122	569	72%	115	69	0	184	23%	
JUN	383	409	48	840	59	2	61	58	20	78	93	103	196	119	454	54%	176	238	0	414	49%	
JUL	402	383	32	817	63	3	66	74	22	96	147	124	271	32	465	57%	113	172	0	285	35%	
AUG	367	314	32	863	53	5	58	79	23	102	101	122	223	83	466	54%	121	93	0	214	25%	
SEP	384	185	5	603	60	2	62	43	10	53	93	75	168	29	312	52%	175	83	0	258	43%	
OCT	350	160	0	746	70	3	73	56	12	68	112	74	186	0	327	44%	121	74	0	195	26%	
NOV	269	66	0	335	36	1	37	38	9	47	80	59	139	0	223	67%	94	12	0	106	32%	
DEC	261	74	0	335	59	2	61	40	5	45	116	50	166	0	272	81%	60	16	0	76	23%	
<b>YTD</b>	<b>4035</b>	<b>2664</b>	<b>339</b>	<b>415</b>	<b>7453</b>	<b>703</b>	<b>38</b>	<b>741</b>	<b>728</b>	<b>143</b>	<b>871</b>	<b>1213</b>	<b>1068</b>	<b>2281</b>	<b>862</b>	<b>4755</b>	<b>64%</b>	<b>1342</b>	<b>857</b>	<b>4</b>	<b>2199</b>	<b>30%</b>



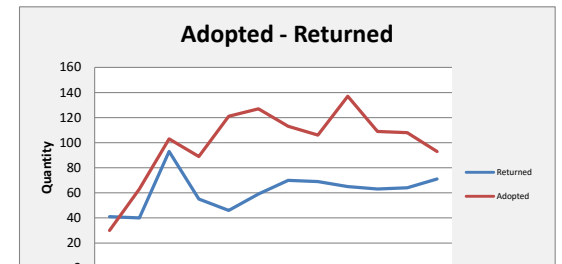
2013 INTAKE					RTO					ADOPTED				RESCUED				HUMANELY EUTHANIZED				
DOG	CAT	CFRC		T	DOG	CAT	T	DOG	CAT	T	DOG	CAT	T	CFRC	GT	PLACED	DOG	CAT	CFRC	T	EUTHANIZED	
JAN	387	146		533	42	4	46	109	17	126	117	49	166	338	63%	108	74		182	34%		
FEB	307	169		476	57	6	63	114	11	125	50	64	114	302	63%	86	86		172	36%		
MAR	317	203		520	62	8	70	109	7	116	68	70	138	324	62%	85	100		185	36%		
APR	329	196		525	52	1	53	120	15	135	71	136	207	395	75%	74	62		136	26%		
MAY	336	374		710	59	2	61	91	36	127	82	205	287	475	67%	97	95		192	27%		
JUN	384	399		783	46	1	47	69	32	101	112	151	263	411	52%	141	202		343	44%		
JUL	432	374		806	58	1	59	93	36	129	89	106	195	383	48%	193	215		408	51%		
AUG	423	341		764	45	4	49	85	37	122	81	28	109	280	37%	210	279		489	64%		
SEP	367	317	38	722	48	3	51	72	65	137	64	41	105	118	411	57%	180	141	1	322	45%	
OCT	319	363	111	793	43	3	46	79	45	124	73	33	106	216	492	62%	116	145	1	262	33%	
NOV	231	276	125	632	37	2	39	65	46	111	37	39	76	249	475	75%	81	71	1	153	24%	
DEC	284	160	47	491	44	3	47	60	36	96	84	49	133	128	404	82%	95	26	2	123	25%	
<b>YTD</b>	<b>4116</b>	<b>3318</b>	<b>321</b>	<b>7755</b>	<b>593</b>	<b>38</b>	<b>631</b>	<b>1066</b>	<b>383</b>	<b>1449</b>	<b>928</b>	<b>971</b>	<b>1766</b>	<b>711</b>	<b>4286</b>	<b>55%</b>	<b>1466</b>	<b>1496</b>	<b>5</b>	<b>2967</b>	<b>38%</b>	



2012 IMPOUNDED					RTO					ADOPTED				RESCUED				HUMANELY EUTHANIZED				
DOG	CAT			T	DOG	CAT	T	DOG	CAT	T	DOG	CAT	T			PLACED	DOG	CAT		T	EUTHANIZED	
JAN	340	179		519	60	6	66	76	26	102	83	21		104		52%	99	125		224	43%	
FEB	347	182		529	58	3	61	90	17	107	80	42		122		55%	127	114		241	46%	
MAR	386	182		568	58	4	62	91	8	99	57	53		110		48%	158	114		272	48%	
APR	351	295		646	66	2	68	85	17	102	47	82		129		46%	155	197		352	54%	
MAY	378	452		830	48	2	50	99	50	149	42	61		103		36%	194	322		516	62%	
JUN	427	358		785	74	4	78	125	40	165	59	93		152		50%	146	217		363	46%	
JUL	431	396		827	77	2	79	83	31	114	54	68		122		38%	225	282		507	61%	
AUG	459	376		835	53	2	55	95	27	122	84	68		152		39%	218	288		506	61%	
SEP	399	340		739	64	8	72	82	29	111	83	70		153		45%	179	232		411	56%	
OCT	367	284		651	40	3	43	79	25	104	90	82		172		49%	147	172		319	49%	
NOV	336	203		539	44	3	47	73	30	103	56	46		102		47%	157	117		274	51%	
DEC	369	155		524	75	7	82	79	32	111	72	43		115		59%	135	85		220	42%	
<b>YTD</b>	<b>4590</b>	<b>3402</b>		<b>7992</b>	<b>717</b>	<b>46</b>	<b>763</b>	<b>1057</b>	<b>332</b>	<b>1389</b>	<b>807</b>	<b>729</b>		<b>1536</b>		<b>46%</b>	<b>1940</b>	<b>2265</b>		<b>4205</b>	<b>53%</b>	



2011 IMPOUNDED					RTO					ADOPTED				RESCUED				HUMANELY EUTHANIZED				
DOG	CAT			TOTAL	DOG	CAT	TOTAL	DOG	CAT	TOTAL	DOG	CAT	TOTAL	TOTAL		PLACED	DOG	CAT	TOTAL	TOTAL	EUTHANIZED	
JAN	404	167		571	40	1	41	29	1	30	29	12		41		20%	282	151		433	76%	
FEB	394	193		587	38	2	40	61	2	63	50	11		61		28%	231	172		403	69%	
MAR	383	158		541	65	8	93	88	15	103	41	24		65		48%	171	109		280	52%	
APR	317	277		594	52	3	55	75	14	89	36	51		87		39%	160	198		358	60%	
MAY	370	383		753	44	2	46	92	29	121	21	18		39		27%	214	341		555	74%	
JUN	437	436		873	58	1	59	83	44	127	43	6		49		27%	257	391		648	74%	
JUL	481	380		861	69	1	70	93	20	113	28	41		69		29%	276	318		594	69%	
AUG	438	247		685	66	3	69	80	26	106	36	28		64		35%	262	180		442	65%	
SEP	419	268		687	61	4	65	98	39	137	56	30		86		42%	202	174		376	55%	
OCT	330	284		614	59	4	63	84	25	109	62	20		82		41%	117	245		362	59%	
NOV	281	212		493	60	4	64	75	33	108	63	19		82		52%	115	169		284	58%	



## COLUMBUS, GA Animal Care Control Center

Last Modified: 10/17/2017

DEC	345	166		511	65	6	71	67	26	93	89	18		107	53%	122	119	241	47%
YTD	4599	3171		7770	697	39	736	925	274	1199	554	278		832	36%	2409	2567	4976	64%



2010	IMPOUNDED			TOTAL	RTO			ADOPTED			RESCUED			TOTAL	% Placed	HUMANELY EUTHANIZED			% EUTHANIZED
	DOG	CAT			DOG	CAT	TOTAL	DOG	CAT	TOTAL	DOG	CAT	TOTAL			DOG	CAT	TOTAL	
JAN	359	133		492	49	2	51	9	2	11	48	18	66	26%	248	110	358	73%	
FEB	297	137		434	35	1	36	21	6	27	39	13	52	26%	207	114	321	74%	
MAR	390	187		577	61	1	62	22	6	28	43	38	81	30%	269	144	413	72%	
APR	369	319		688	39	5	44	34	9	43	22	17	39	18%	272	271	543	79%	
MAY	386	356		742	45	3	48	15	6	21	46	34	80	20%	276	328	604	81%	
JUN	479	474		953	51	1	52	23	5	28	35	11	46	13%	373	443	816	86%	
JUL	480	282		762	66	2	68	15	3	18	33	7	40	17%	357	280	637	84%	
AUG	422	303		725	33	1	34	20	12	32	31	16	47	16%	328	280	608	84%	
SEP	378	303		681	62	4	66	18	1	19	35	12	47	19%	280	285	565	83%	
OCT	364	223		587	44	3	47	29	7	36	35	11	46	22%	250	196	446	76%	
NOV	270	250		520	65	10	75	23	5	28	25	6	31	26%	183	229	412	79%	
DEC	355	156		511	52	4	56	23	11	34	38	10	48	27%	236	136	372	73%	
YTD	4549	3123		7672	602	37	639	252	73	325	430	193	623	21%	3279	2816	6095	79%	

