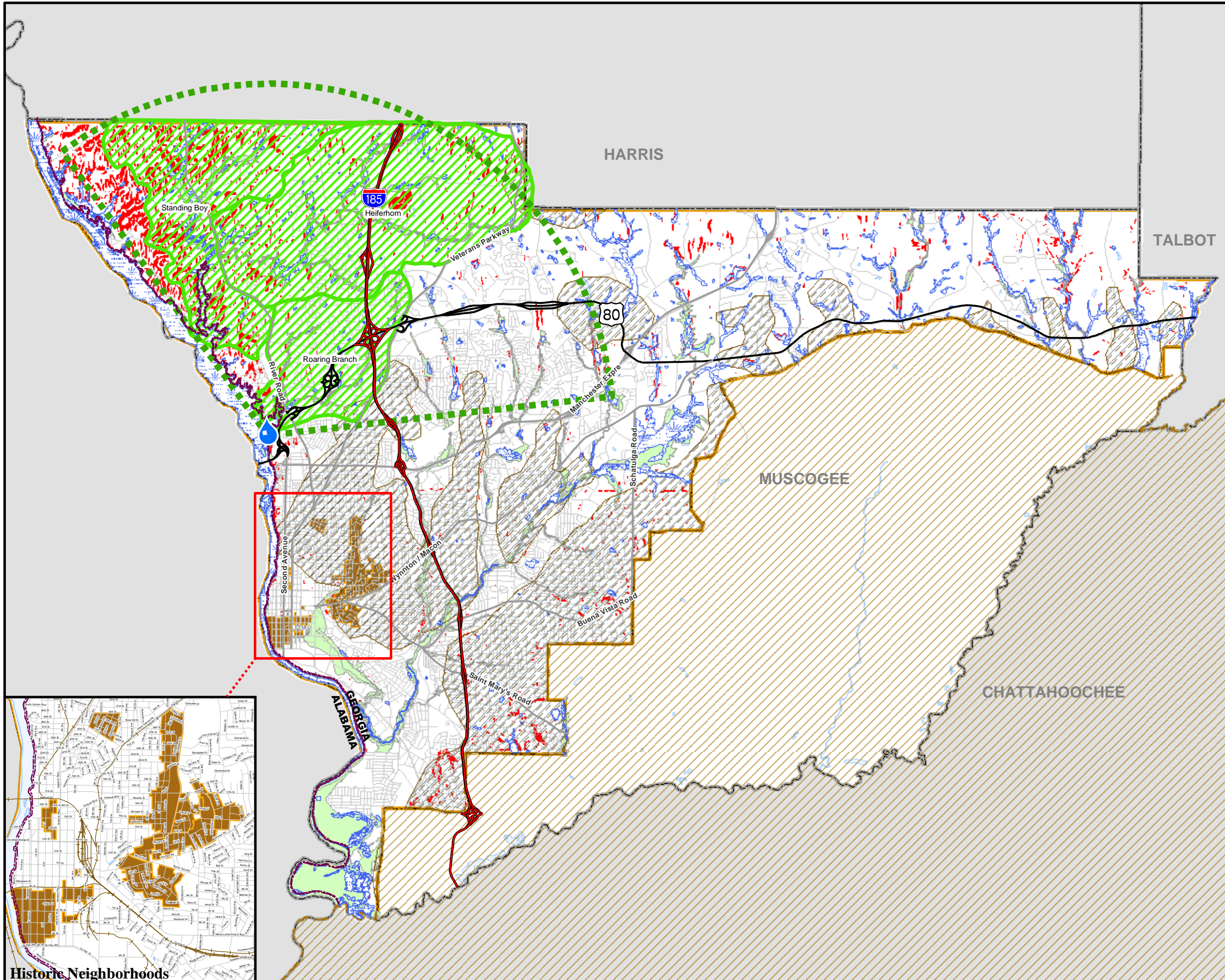
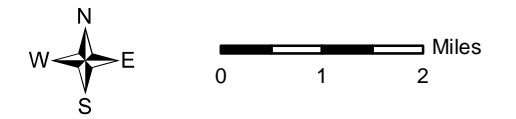
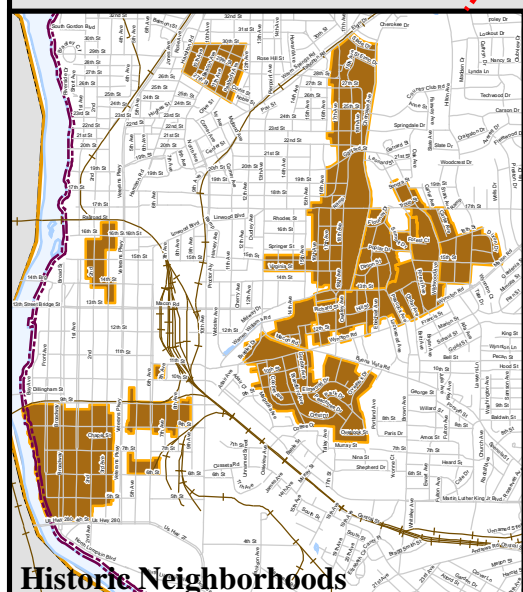


Areas of Special Attention -  
Natural and Cultural Resources



- Raw Water Intake
- Wetlands
- Protected Watersheds
- 100 Year Floodplain
- 7 Mile Protected Watershed Buffer
- Ground Water Recharge Areas
- Slopes Greater than 15%
- Historic Districts and Neighborhoods
- Stream/River
- Lakes & Ponds
- State Protected Rivers
- I-185
- JR Allen / US 80
- Major Roads
- Streets (Centerline)
- Railroad
- City Boundary
- Other Counties
- Fort Benning



Map ###

