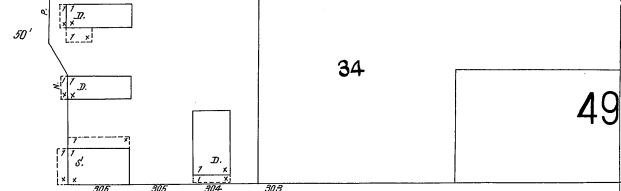
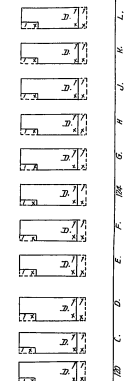
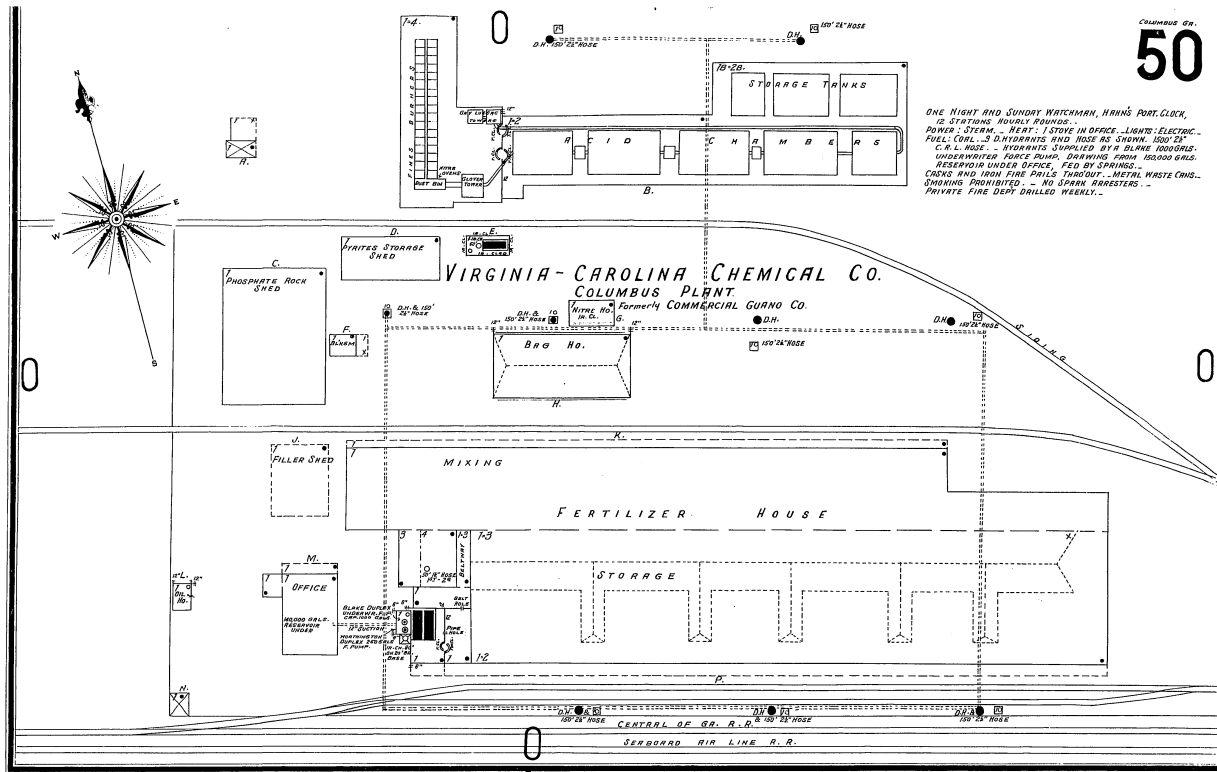


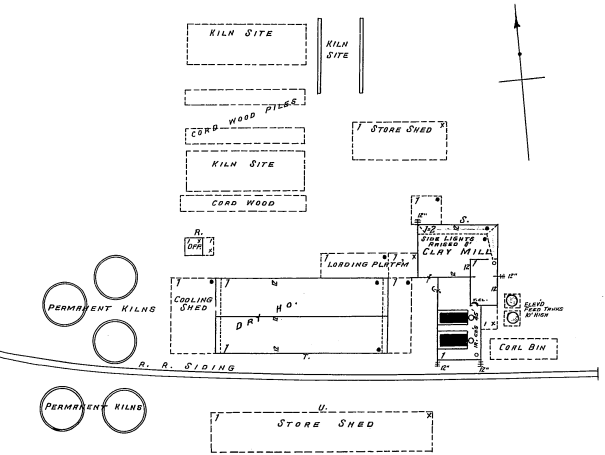
ONE NIGHT AND SUNDAY WATCHMAN, NINING PART. CLOCK,
 12 STATIONS. HOURS: 11:00 AM.
 POWER: STEAM. - HEAT: 1 STOVE IN OFFICE. LIGHTS: ELECTRIC.
 FUEL: COAL. - 3 BURNERS AND HOSE AS SHOWN. 1000' 2"
 C. P. L. HOSE. - HYDRANTS SUPPLIED BY 4 BLANK 1000' GALS.
 UNDERGROUND FORCE PUMPS. DRAWING FROM 150000 GALS.
 RESERVOIR UNDER OFFICE, FED BY SPRINGS.
 CHAINS AND IRON FIRE PAILS THROUGH. METAL WASTE CHAS.
 SMOKING PROHIBITED. - NO SPARK BRISTERS. -
 PRIVATE FIRE DEPT DRILLED WEEKLY. -

LUMPKIN ROAD

VIRGINIA-CAROLINA CHEMICAL CO.
COLUMBUS PLANT
 Formerly COMMERCIAL GUANO CO.



1/2 Mile S.E. of Home Mixture Guano Co
 No EXPOSURE ANY SIDE.



SHEPHERD BROS. BRICK FACTORY

BUILT 1904. - REPAIR EXCELLENT.
 45-50 EMPLOYEES. - RUN DRY ONLY.
 NIGHT AND SUNDAY WATCHMAN, NO COOK.
 POWER AND HEAT: STEAM, STOVE IN OFFICE.
 LIGHTS: BATTERY LANTERNS. - FUEL: COAL
 AND COAL WOOD.
 NO FIRE APPARATUS EXCEPT ONE ROYAL SOBR.
 CHEMICAL TIME EXPOS.

THE COLUMBUS POWER CO.
 Formerly CHATTAHOOCHEE VALLEY MFG CO.
 YACHT AND DILAPORATED.

