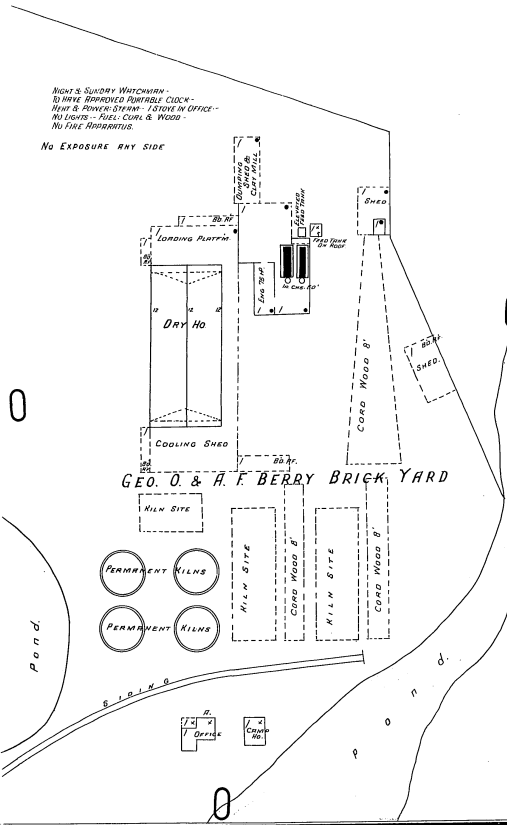
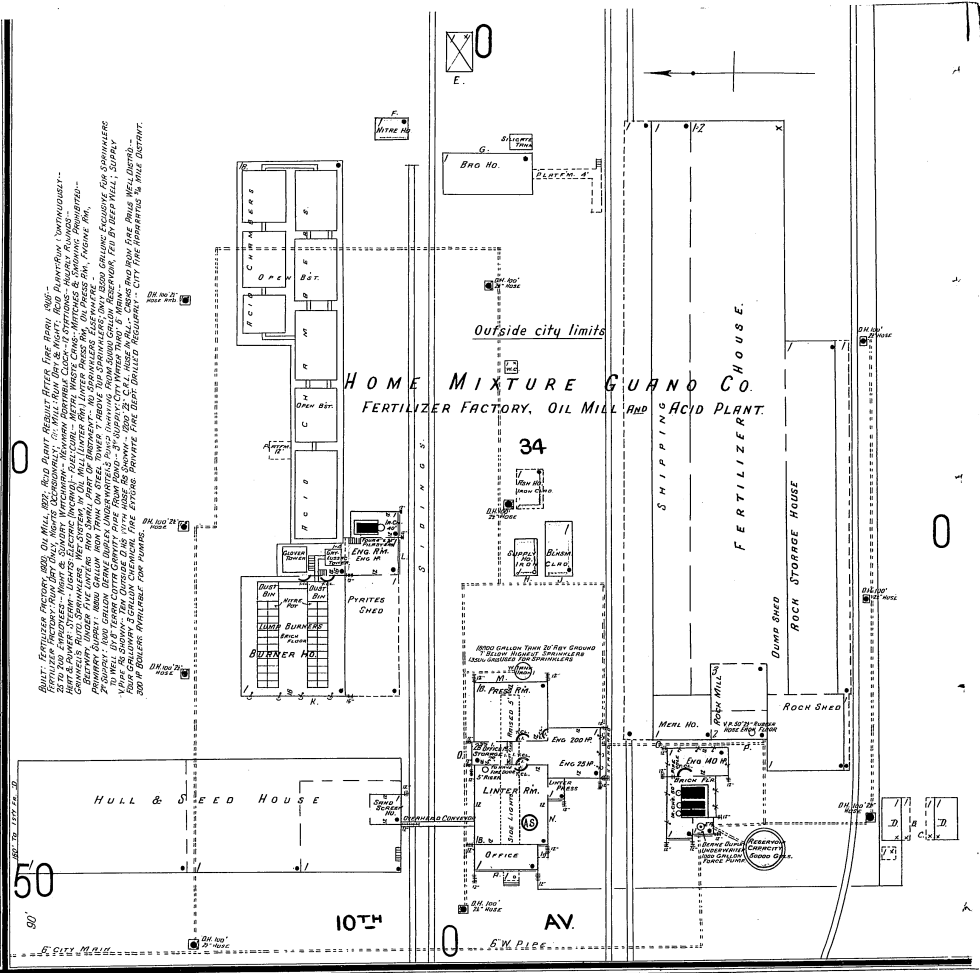


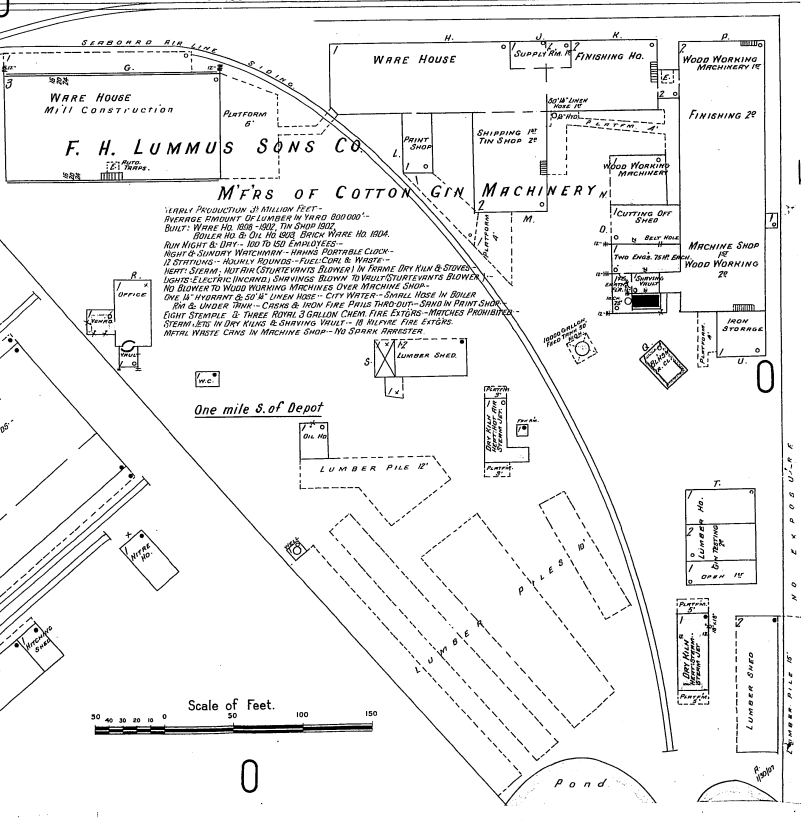
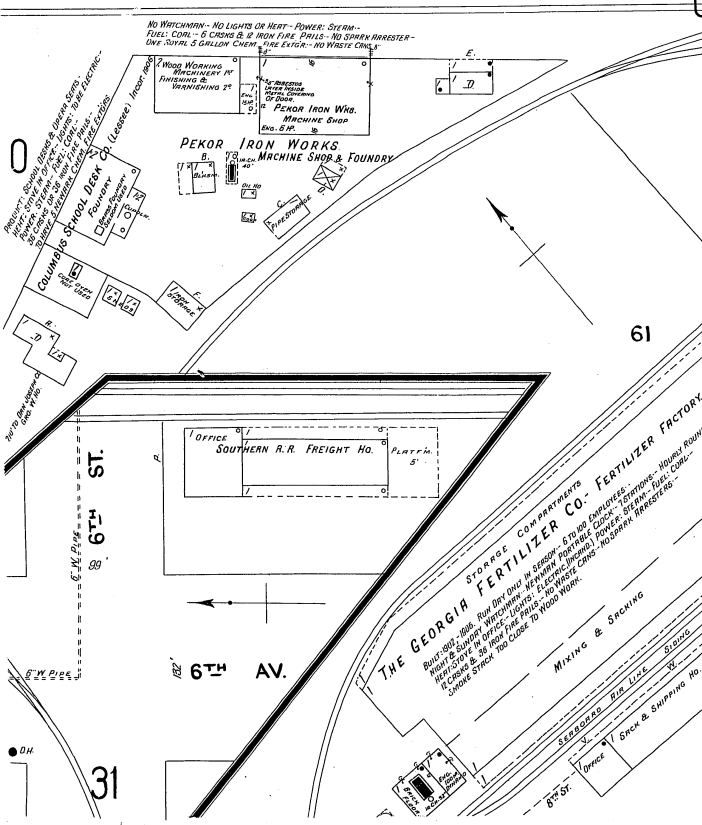
NO FIRE ALARMS
NO LIGHTS - FUEL, COAL & WOOD
NO EXPOSURE ANY SIDE



ABOUT FERTILIZER FACTORY: 1000 TON MILL, 1000 TON BARYTE PLANT, 1000 TON SULPHUR PLANT, 1000 TON NITROGEN PLANT, 1000 TON PHOSPHORUS PLANT, 1000 TON POTASH PLANT, 1000 TON SODIUM PLANT, 1000 TON CALCIUM PLANT, 1000 TON MAGNESIUM PLANT, 1000 TON ZINC PLANT, 1000 TON COPPER PLANT, 1000 TON LEAD PLANT, 1000 TON IRON PLANT, 1000 TON STEEL PLANT, 1000 TON ALUMINUM PLANT, 1000 TON SILICON PLANT, 1000 TON BORON PLANT, 1000 TON FLUORINE PLANT, 1000 TON CHLORINE PLANT, 1000 TON BROMINE PLANT, 1000 TON IODINE PLANT, 1000 TON OXYGEN PLANT, 1000 TON HYDROGEN PLANT, 1000 TON CARBON PLANT, 1000 TON NITROGEN PLANT, 1000 TON PHOSPHORUS PLANT, 1000 TON POTASH PLANT, 1000 TON SODIUM PLANT, 1000 TON CALCIUM PLANT, 1000 TON MAGNESIUM PLANT, 1000 TON ZINC PLANT, 1000 TON COPPER PLANT, 1000 TON LEAD PLANT, 1000 TON IRON PLANT, 1000 TON STEEL PLANT, 1000 TON ALUMINUM PLANT, 1000 TON SILICON PLANT, 1000 TON BORON PLANT, 1000 TON FLUORINE PLANT, 1000 TON CHLORINE PLANT, 1000 TON BROMINE PLANT, 1000 TON IODINE PLANT, 1000 TON OXYGEN PLANT, 1000 TON HYDROGEN PLANT, 1000 TON CARBON PLANT.



CENTRAL OF GE. R.R. SEABOARD AIR LINE R.R.



Scale of Feet. 0 50 100 150