

COLUMBUS GA.

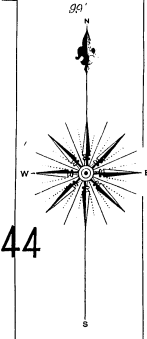
45

43  
E. 11<sup>TH</sup> ST.

45

9<sup>TH</sup> AV.

THE SOUTHERN COTTON OIL CO. COLUMBUS PLANT.  
COTTON SEED OIL MILL.  
FORMERLY MUTUAL OIL CO.



44

92

GEORGIA COFFIN CO.  
FORMERLY UNION IRON WORKS

E. 10<sup>TH</sup> ST.

Vertical text block containing detailed notes and specifications for the plant area, including references to 'MULE & WAGON SHED' and 'CITY STABLES'.

44  
E. 10<sup>TH</sup> ST.

44

E. 10<sup>TH</sup> ST.

8<sup>TH</sup> AV.

87

RIGBY COIL & WOOD CO.  
COIL & WOOD YARD.

46  
E. 9<sup>TH</sup> ST.

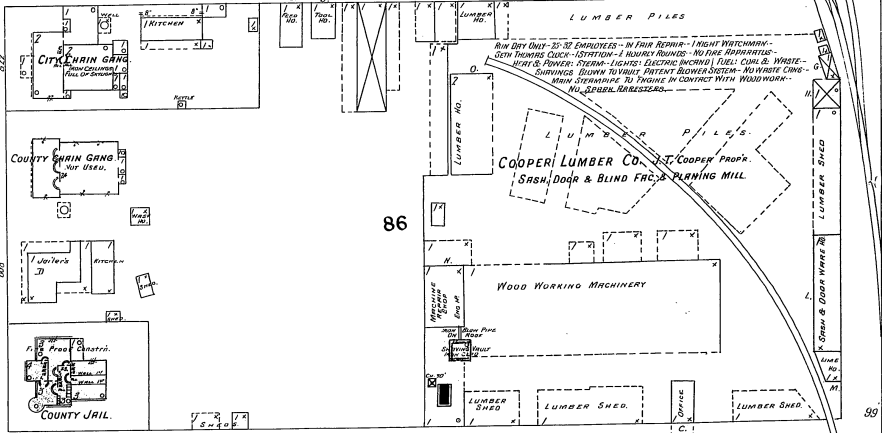
45

E. 9<sup>TH</sup> ST.

7<sup>TH</sup> AV.

86

COOPER LUMBER CO. COOPER PROP.  
SHED DOG & BLIND FAC. PLANING MILL



Scale of Feet.

19  
6<sup>TH</sup> AV.

46

