

27

24

BROAD

28

22

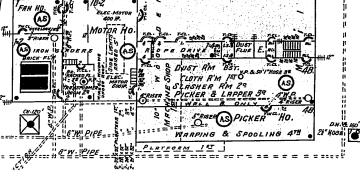
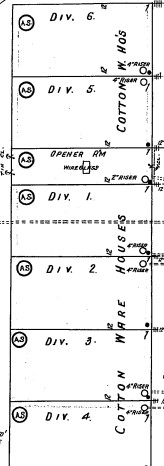
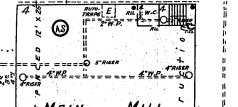
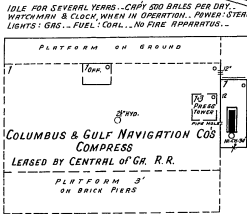
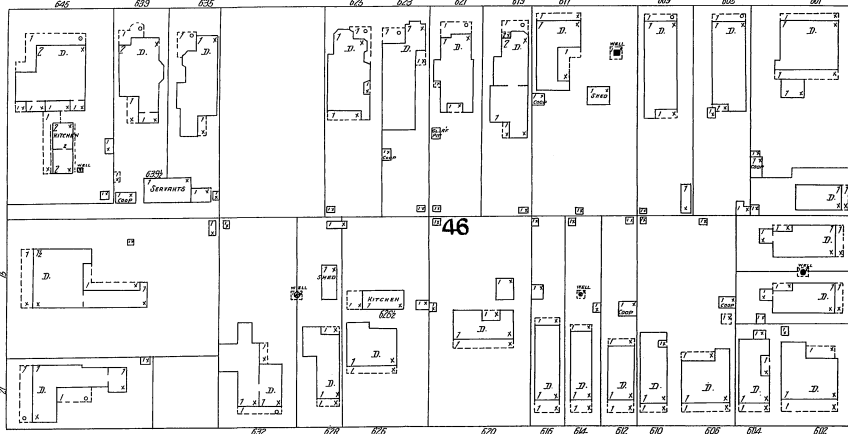
FRONT

ST.

W. 6TH ST.

W. 7TH ST.

1ST AV.

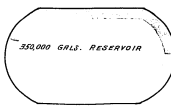
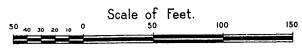
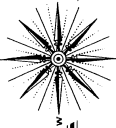


IDLE FOR SEVERAL YEARS - CAPY 500 BALES PER DAY.
WATCHMAN & CLOCK WHEN IN OPERATION. POWER STEAM.
LIGHTS: GAS - FUEL: COAL - NO FINE SPRINKLERS.

RUN DAY & NIGHT IN SUMMER - 10 EMPLOYEES.
NIGHT & SUNDAY WATCHMEN [WAS DUTY AS FIREMAN].
NO CLOCK. REST: 1 1/2 HOURS IN OFFICE.
LIGHTS: KEROSENE - FUEL: COAL - 1 1/2" PIPE
10" WHEEL MILL - 100' 1/2" RUBBER HOSE RIGID
BELOW.

BUILT 1900 - PRODUCT: SHEETINGS - 25000 SPINDLES -
RUN DAY ONLY - 300 EMPLOYEES - NIGHT AND SUNDAY WATCHMAN,
SEWARD ELECTRIC CLOCK, 5 STATIONS, HOURS BELL,
POWER AND LIGHTS: ELECTRIC - HEAT: HOT AIR (STURTEVANT'S
BLOWER SYSTEM) - FUEL: COAL -
ESTY AUTO SPRINKLERS THROUGHOUT, EXCEPT WASTE AND OIL ROOMS & OFFICE,
PUMP RM AND 50' OF MOTOR RM. WET SYSTEM THROUGHOUT
PRIMARY SUPPLY IN 4000 GAL. IRON WATER TANK IN 100' HIGH STEEL
TOWER 20' ABOVE TOP SPRINKLER.
25 3/4" DIAMETER 1 1/2" DIAMETER 1000 GAL. DUPLEX UNDERWRITER PUMP,
DRAWING FROM A 350,000 GAL. RESERVOIR FILLED FROM RIVER BY
A 6" DIAMETER VERTICAL TRIPPLE PUMP ON OVER 500' DISTANT.
HYDRANTS AND ROSE AS SHOWN, 2000' P.C.R. ROSE IN ALL -
LIGHT PIPE 8 3/4" IN DIAMETER IN PICKER ROOM - FILLED IRON FIRE
PAILS WELL DISTRIBUTED.

Chattahoochee River



7/25/04