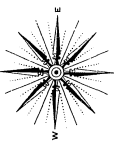
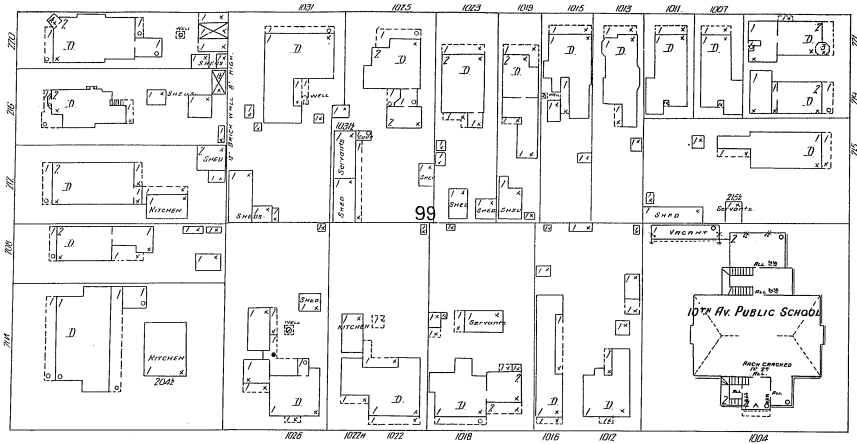


14

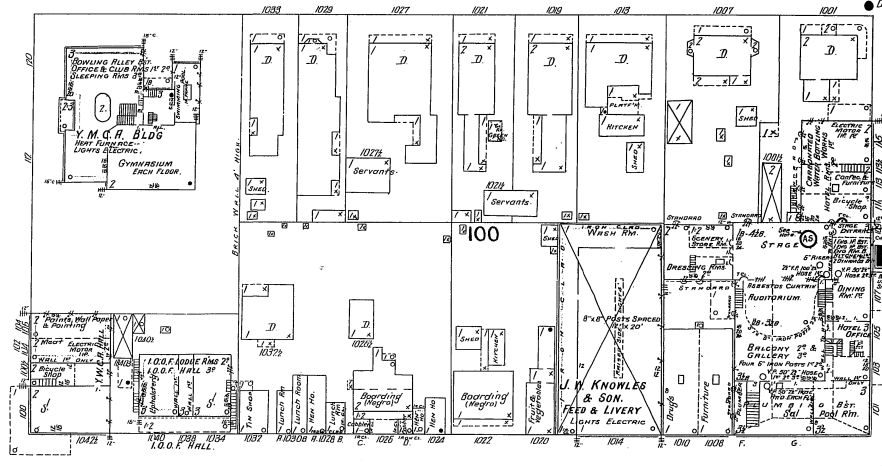
3RD 16 AV.



2ND AV.

13

E. 11TH ST.



17

E. 10TH ST.

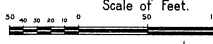
**SPRINGERS OPERA HO.**  
 OPERA HO. & HOTEL BUILT 1902  
 NO WATERTIGHT BUT SURE MEN BROTHERS  
 ON DUTY - HERT STEIN - FULL LOU  
 LIGHTS ELECTRIC (MOTOR) AND GAS -  
 (POWER) STEIN AND ELECTRIC  
 GRINNELL'S AUTO SPRINKLERS (WIND  
 SENSORS AND DISCONNECT) NOT SYSTEM  
 OVER STAGE & ENTIRE BLDG. ONLY -  
 NO SPRINKLERS ELECTRICALLY -  
 SUPPLY CITY WATER, THIRD E MAIN  
 BLDG PRESS ONLY - 15 LBS PRESSURE  
 ON TOP SPRINKLERS -  
 4 PIPES & HALL NO SHOWN  
 16 PATROL 3 GARDEN CHEMICAL  
 FIRE EXTING.

1ST AV.



BRICK PAVED.

Scale of Feet.



12 BROAD

