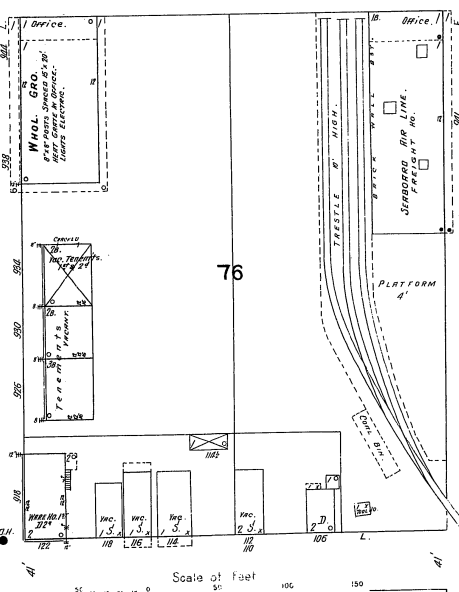
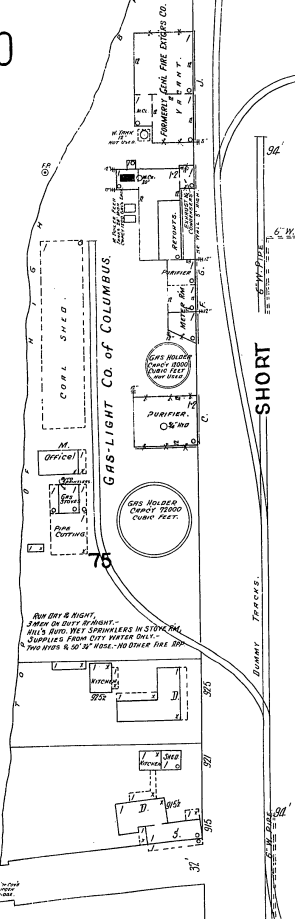
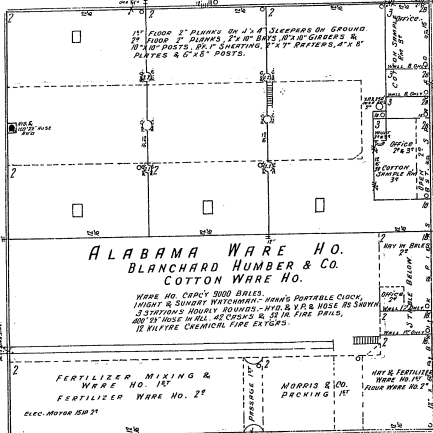
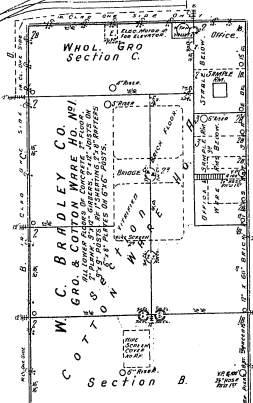


12

COLUMBUS ST.
Chattahoochee River

W.C. BRADLEY CO.
CAPACITY 1000 BALS. WOL. WARE NO. 21, E.C. - SEE SHEET # 11
EQUIPPED BY ONLY 25 EMPLOYEES, NIGHT & SUNDAY WATCHMAN -
BUSES PORTABLE COOK 1 STATIONS, HOURLY BOUNDS -
BEST STONED LIGHTS COOK - GRINDERS BOLD, DAY SYSTEM SPRINKLERS
THROUGHOUT EXCEPT BOST. OF D. E. K. & G. & H. WAREHOUSE CLOSED. BURNING AND
OVER BURNING OF B. CO. IN SECTION A. - 1000 BALS. IN SECTIONS B, C, D,
AND NEARBY IN D. E. K. G. BOTH OLD & NEW STANDARD SPRING
BURNING SUPPLY CITY WATER 50 LBS. PRESSURE, 2 SUPPLY 3000
GALLONS TANK ON 15' ABOVE TOP SPRINKLERS & THERMOSTAT
SPRINKLER TYPICAL LINES - 8 SAFETY FIRE BUCKETS 2000 LB.
30 CRACKS WITH 10 IRON FIRE PAILS, 100 FILLED IRON FIRE PAILS
PIPES & HOSE AS SHOWN, 100 75' HOSE IN ALL.

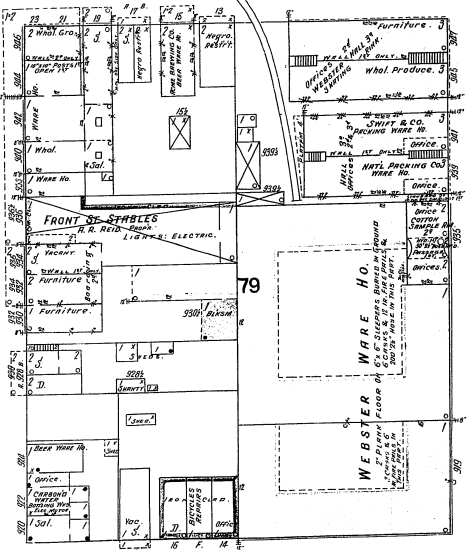
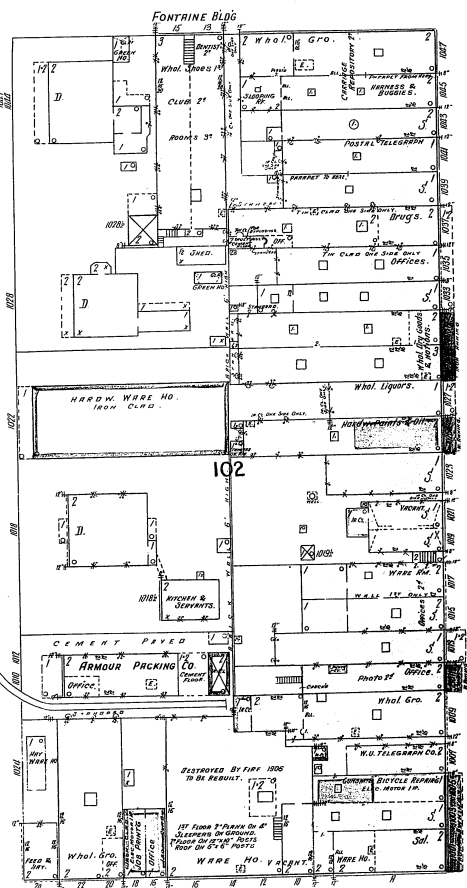
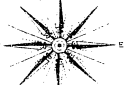


Scale of Feet
0 50 100 150

21

11

W. 11TH ST.
FRONT ST.
DUMMY TRACKS
6" W. PIPE
6" W. PIPE



DILLINGHAM MACDONALD

14

BROAD

17

6" W. PIPE
6" W. PIPE