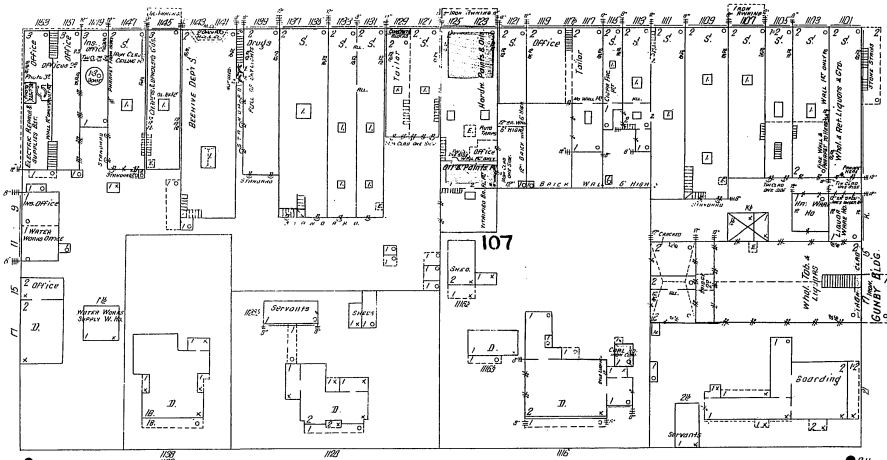


11

13

BROAD



ST.

ST.

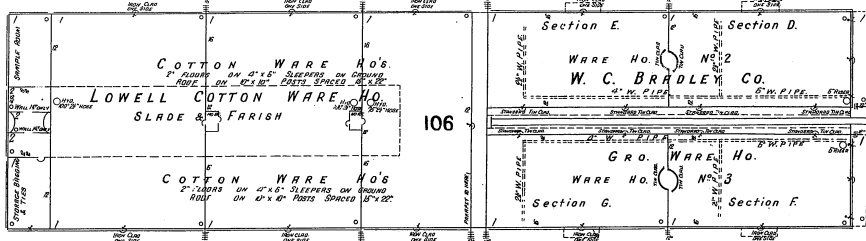
2

FRONT

12

LOWELL COTTON W. HO.
 NIGHT BELL SUNDAY WATCHMAN DURING SEASON.
 HORNMAN, PORTABLE CLOCK 12 STATIONS -
 HORNMAN'S BOUND.
 LIGHTS GRG. - HERT ONE SIDE IN OFFICE -
 HYDRANTS AND HOSE 60' LONG.
 2 1/2" (C.S.L.) HOSE IN ALL - CITY WATER -
 TO HAVE AUTO SPRINKLERS -
 TO FILLED IRON FIRE PIPES -

W. 12TH



W. 11TH

W. C. BRADLEY CO.
 CONSTRUCTION, OPEN JOIST FLOORS
 ON 8" X 24" BRICK PIERS 6' HIGH AND
 SPACED 15' X 25'. ROOF ON 10" X 10" POSTS
 SPACED 15' X 25'.
 (DAY SYSTEM) SUPPLIED FROM 25,000
 GAL. TANK IN TOWER OF TOWER 10' HIG
 ACROSS STREET. FOR COMPLETE REPORT
 SEE SHEET 1112.

BAY

105

Chattahoochee River

