

EAGLE & PHENIX MILLS F. H. RISK

**COTTONS, CHECKS, STRIPES, DENIMS, TICKING
RPT., BULLTREAD & OUTINGS.**

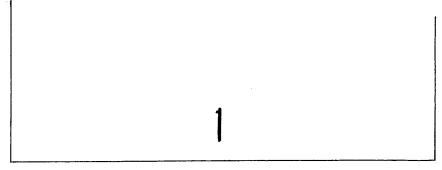
63000 SHAKLES - 700 LUMBS - 250 CARDS -

RUN DAY ONLY - 1000 EMPLOYEES

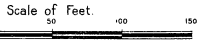
2 DAY, 1 SUNDAY AND 3 NIGHT WATCHMEN, FORWARD ELECTRIC CLOCK,
40 STATIONS 1/2 B STATIONS 2000 AND SEPARATE WATERMILL AT SHAND
COTTON MILL, SEE SHEET N52, HOURLY ROUNDS

WATER SYSTEM - LIGHTS, ELECTRIC LINE, AND 2 MIL. POWER WATER
(2000 HP) AND SMALL HYDRO-ELECTRIC (2000 KW) DUE TO
WELL (PICKER) AND SHAKLES (25% OF WHEEL) PWD, CRANKLETS PARING
EACH IN PLATE NO. STRIPES AND CHECKS IN LUMBER YARD IN OLD WARE HO.
WIT SYSTEM THROUGH, EXCEPT IN OFFICE AND STORAGE HO, 60000 WARE HO,
NEW STORE HO, AND WARE HO, WARE HO SYSTEM, 100 STANDARD SPINING,
PRIMARY SUPPLY: TWO 7000 GALS. WATER TANKS IN TOWERS OF MILL N53,
1" PIPING, TWO CHIMNEYS.

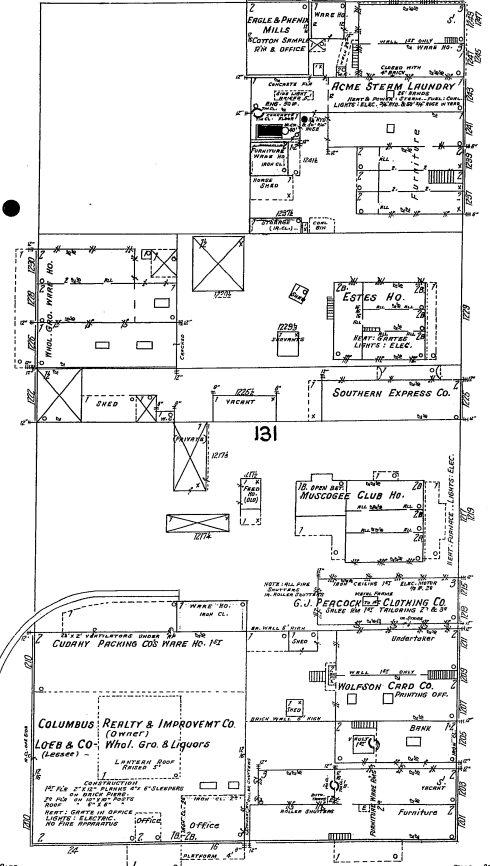
28 SUPPLY - FIRE PUMPS:
1 1/2" PIPES AND VEHICLES, ROBERT F. PUMP CAPCY 1000 GALS, 5" DUCTION FROM RIVER,
1000' 12" FLUME
1 1/2" BELLE CHAMBER DUPLEX UNDERWATER, 3/4" PUMP 400 GALS, 1/2" DUCTION FROM RIVER.
1 1/2" BELLE SINGLE F. PUMP, CAPACITY 300 GALS, 12"
3" SUPPLY: CITY WATER THROUGH 6" MAIN, PRESSURE 40-100 LBS.
NO STOPPAGE IN FLOW - REPAIRED WATER UNDER TUBS OF EXTRE LENGTH
OF ROOF OF MILL N53, WITH CONTROLLING VALVE ON 5" PIP. OF SOUTH TOWER -
OUTSIDE FROM MAIN, 1" SPRAWLER CONNECTIONS TO 1" LUMBER HO. WITH HOSE IN ALL,
TWO 1/2" WAYS, 1/2" - 3/4" WAY AND 1/2" SINGLE HYDRANTS, 1000' 2 1/2" C.R.L. HOSE IN ALL,
INCLUDING 500' ON REEL, OUTSIDE OF MILL W/2.
1" SPRAWLER CONNECTIONS, WITH 1" LUMBER HOSE ATTACHED AS SHOWN IN PICKER HO. AND
5 BAROCK, 3 GALS. CHEMICAL FIRE EXTING. IN PICKER ROOMS, FILLED WITH FIRE
PUMP THROUGH, 60' IN ALL.
ORGANIZED PRINTER FIRE DEPT., 18 MEN, DRESSED ONCE IN MONTH.
ONE 40' EXTENSION LADDER, ONE 30' STAIRWAY LADDER.
ONE HOSE REEL, AND ONE 2 1/2" C.R.L. HOSE UNDER PLATFORM AT MILL N52.
METAL WASTE CANS - MATCHES PROHIBITED.
ONE KIDNEY MILL CONSTRUCTION EXCEPT ROOF OF MILL N53, AND FLOOR OF
OFFICE BUILDING (EXCEPT 1ST FL.) AND NORTH MONITOR OF WOOL FINISHING
HO. WHERE CONCERNED SPACES.



W. 13TH ST



FRONT



BROAD

8

W. 12TH ST

11
ST.