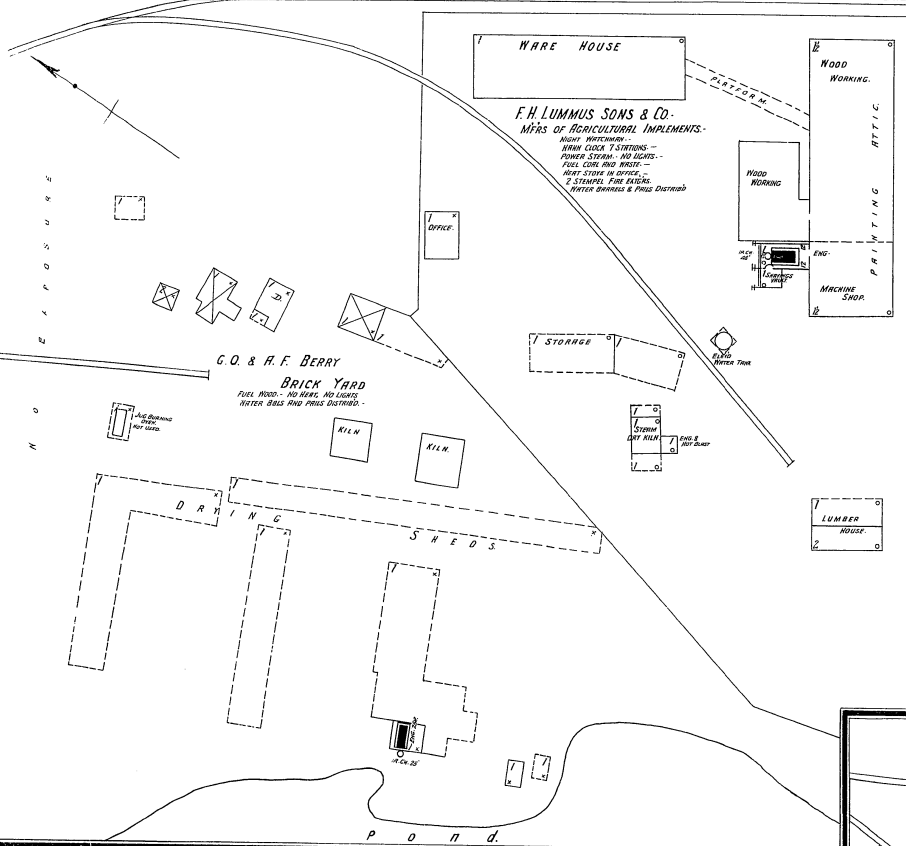


CENTRAL OF GA. R.R.



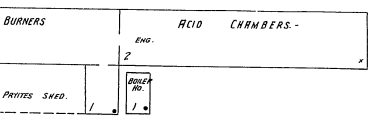
**F.H. LUMMUS SONS & CO.**  
MFRS OF AGRICULTURAL IMPLEMENTS.

NOTE: INTERIORS -  
 MAIN CLOCK 7 STATIONS -  
 POWER STEAM - NO LIGHTS -  
 FULL COIL AND WIRE -  
 PART STORE IN OFFICE -  
 2 STAMPS, FIRE EXTING -  
 WATER TANKS & PUMP OUTSIDE

**G.O. & H.F. BERRY**  
BRICK YARD  
FULL PROD. - NO LIGHTS, NO LIGHTS,  
WATER BILLS AND PUMP DISTRI.

DRYING SHEDS

POND

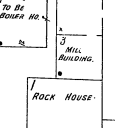


**HOME MIXTURE GUANO CO.** FROM PLANS.

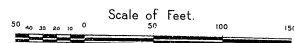
TO TAKE AS FOLLOWS -  
 NIGHT WATCHMAN - NO CLOCK -  
 POWER STEAM AND COILS -  
 LIGHTS - ELECTRIC -  
 6 ROOMS EITHER CONNECTED WITH  
 CITY MAIN OR LEAD WATER TANK.

34

**DUMP & SHIPPING SHED**

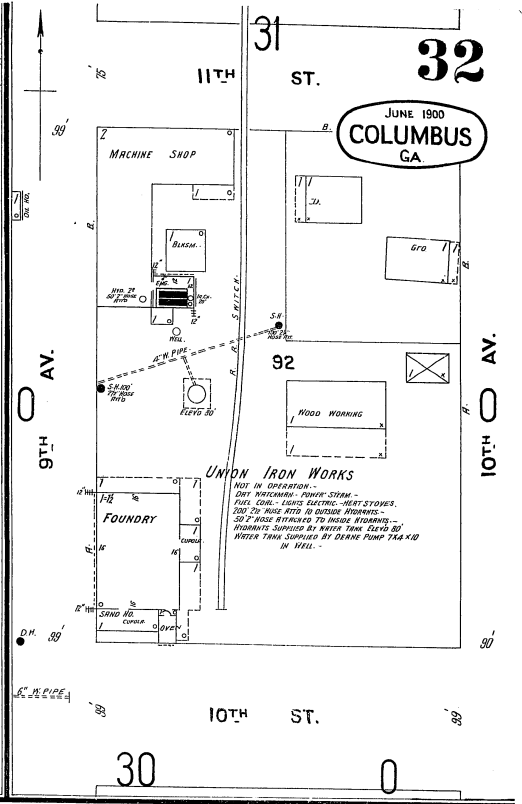


ROCK HOUSE



NO EXPOSURE

JUNE 1900  
**COLUMBUS**  
GA.



11TH ST.

32

9TH AV.

10TH AV.

10TH ST.

30

0

R.R. SWITCH

DRYING SHEDS

**SHEPHERD BROS. BRICK YARD**

NIGHT WATCHMAN - NO CLOCK -  
 POWER STEAM - NO LIGHTS -  
 NO EXPOSURE ANY SIDE.

DRYING SHED

DRYING SHED

POND

**GEO. O. & M.W. BERRY, BRICK YARD.**

NIGHT WATCHMAN - NO CLOCK - FULL PROD. - NO LIGHTS -  
 NO EXPOSURE ANY SIDE.



ENG. SHOP

NO EXPOSURE