

# EAGLE AND PHENIX MILLS

## COTTON AND WOOLEN MILLS

### 54000 SPINDLE AND 1800 LOOMS

1600 HOURS TWO DRY & FOUR MOIST WAREHOUSES REARWARD ELECTRIC LOCK  
 45 STOVES ASHALL BUNGS, STEAM WATER (5000) LEADS ELECTRIC (1)  
 BEST STEAM TRAIL, ROOM PIPES FROM ON TOWN SPINDLES & PARTIALLY FROM PLAS  
 BULL, AUTO SPRINGERS TAKING SUPPLIED BY TWO 1000 GAL. W. TANKS  
 15 TUBS HIGHEST SPRINGERS REAR, 16 TRIPLE & TWO AMPY HIGHEST  
 HIGHEST & SPRINGERS SUPPLIED WITH WATER BY THREE 400 G. TANKS &  
 ONE MOISTURE REMOVAL P. PUMPS EACH OF 800 GAL. CAP.  
 ONE WINDMILL SHELVE ACTION S.O.G. PUMPS & ONE SURE INSURE 1000 GAL. PUMP  
 HIGHEST & SPRINGERS & PUMPS ARE CONNECTED BY MAINS 4" TO 10"  
 ABOUT 3000 OF 2" WISE, TWO PIPES WITH HOLE EACH FLOOR AS SHOWN  
 ONE 100 GAL. CUM. PIPES END & 4000 TUBES, ONE PIPES IN EACH ROOM  
 WATER CRACKS IN PRINCIPAL ROOMS -

#### MILL No 1

1" P.L. - CARDSING & SPINNING  
 24 - COTTON CARDSING - 374. REWINDING  
 45 - SPINNING - 51 L. BEAMING & DRESSING  
 171 - TWIN STOVES  
 ONE INSIDE & TWO OUTSIDE P. PIPES  
 WITH LADDERS TO ROOF & ROPE RIGS OVER FL.  
 AUTO SPRINGERS EACH FL. & ENTIRE LENGTH  
 OF ROOF UNDER RIDGE  
 WATER CRACKS IN FINE PIPES ON EACH FL.  
 WATER TANK IN STEAM TOWER CAP 20000 GAL.

#### MILL No 2

1" P.L. - CARDSING & SPINNING  
 35 - REWINDING 43 - SPINNING  
 39 - BEAMING & DRESSING  
 437 - (TWIN) ROPE MACHINERY  
 ONE INSIDE & TWO OUTSIDE P. PIPES  
 WITH LADDERS TO ROOF & ROPE RIGS OVER FL.  
 AUTO SPRINGERS EACH FL. & ENTIRE  
 LENGTH OF ROOF UNDER RIDGE  
 AUTO SPRINGERS IN ROPE HOUSE  
 3 TANKS IN STEAM TOWER, TOTAL CAP 60000 GAL.

#### MILL No 3

1" P.L. - REWINDING & P.L. REWINDING  
 35 - CARDSING 45 - SPINNING 51 L. DRESSING  
 WATER TANKS IN STEAM TOWER 2000 GAL. EACH  
 THESE TANKS ARE CONNECTED BY PIPES  
 ONE INSIDE P. PIPE WITH 100" 2" HOLES ATD EACH FL.  
 C. SPRINGERS ARE IN OUTSIDE TOWER  
 AUTO SPRINGERS ON ALL FLOORS, AND PUMPWORKED  
 IN PIPE ENTIRE LENGTH OF ROOF UNDER RIDGE  
 WATER CAN BE TURNED ON FROM OUTSIDE OF BLDG.  
 ON CIRCULAR NEAR TOWER, ONE PIPE FOR WINDMILL  
 CEILING ARE LATH AND PLASTERED  
 ALL FLOORS LATH IN PARTIAL.

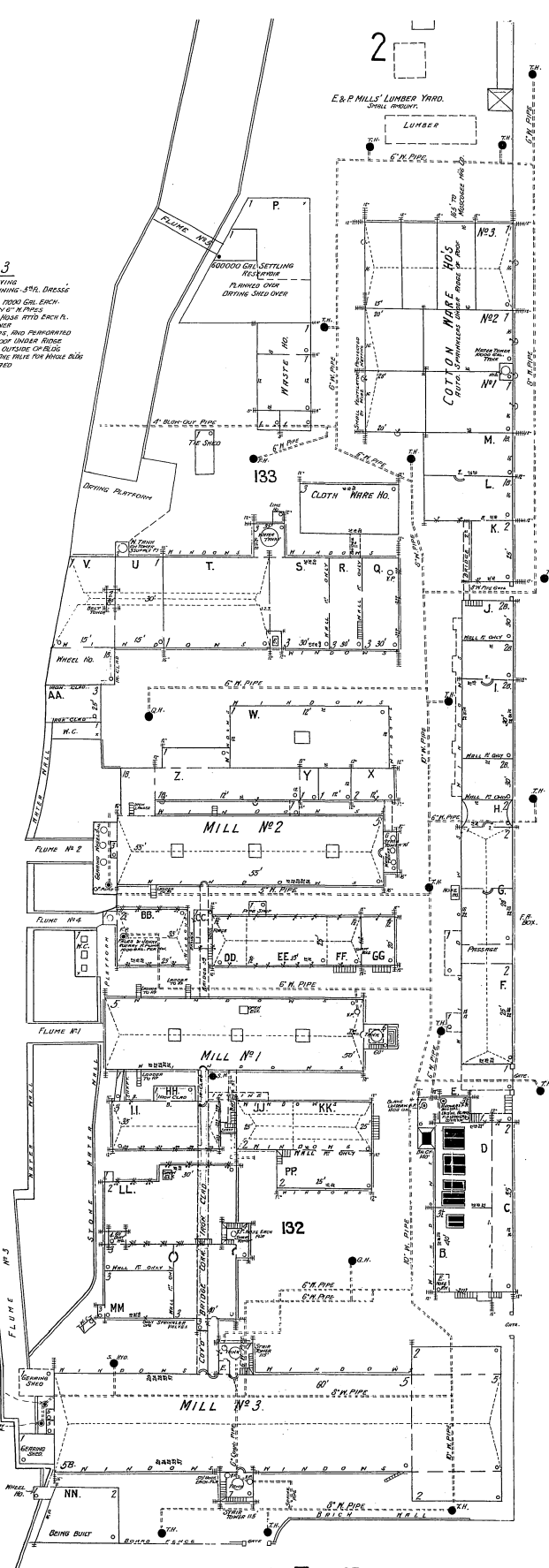
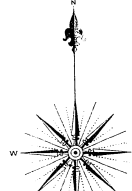
#### OCCUPANCIES OF OTHER BUILDINGS

- B. COAL STORAGE 17
- STEAM TRAIL OFFICE 24
- STEAM TRAIL OFFICE 45
- C. DAYWAY 17
- YARD STOVES 17
- D. BOILER ROOM 17
- STEAM TRAIL OFFICE 17
- E. WATER TOWER
- BOILER TRAIL 10000 GAL.
- F. OFFICES & SALES 100
- OFFICES & STORAGE
- FRASSAGE INT. 17
- STORAGE 17
- I. MOOL DRESSING
- STORAGE 17
- J. STORAGE & OFFICE 17
- K. MILLS ROOM 17
- L-M. STORAGE
- N. PICKER ROOM
- PARTITION STORAGE
- R. ROPE TWIN SPINNING
- S. DRESSING 17
- T. DRESSING 17
- U. BLEACH SHED
- V. SEED STORAGE
- W. SEED STORAGE
- X-Y. STORAGE
- Z. PICKER ROOM
- AA. PARTITION STORAGE
- BB. ROPE TWIN SPINNING
- CC. BLEACH SHED
- DD-EE. MACHINE SHOP
- FF. COTTON & WOLLEN MACHINERY
- GG. SEED STORAGE
- HH. MILL GRANTY PACK

BRIDGE CONNECTING 5<sup>TH</sup> FLOORS OF  
 MILLS 1 & 2. IS 200' LONG  
 BRIDGE CONNECTING 5<sup>TH</sup> FLOORS OF  
 MILLS 1 & 3. IS 300' LONG  
 THESE BRIDGES ARE CONN. SHEET-IRON CLAD  
 & HAVE TIN ROOFS

River

Chattahoochee



JUNE 1900  
 COLUMBUS  
 GA

11

2

5

W. 12<sup>TH</sup> 7 ST.