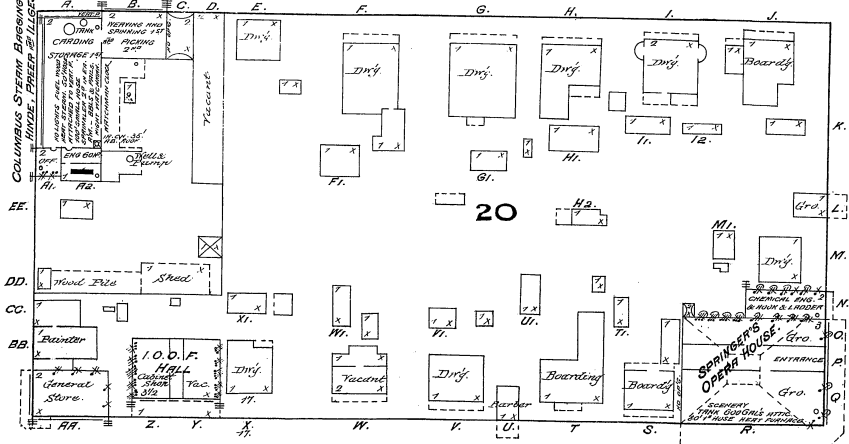


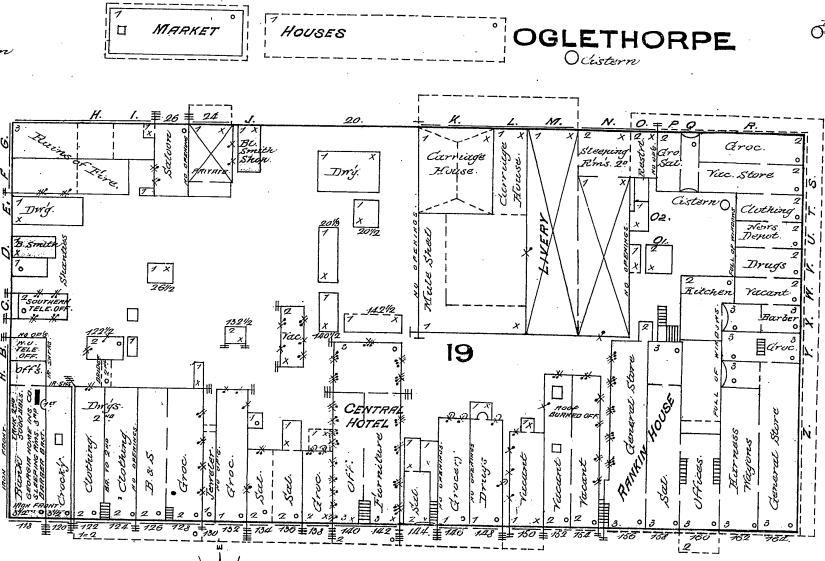
FEB. 1885
COLUMBUS
GA.

COURT HOUSE SQUARE

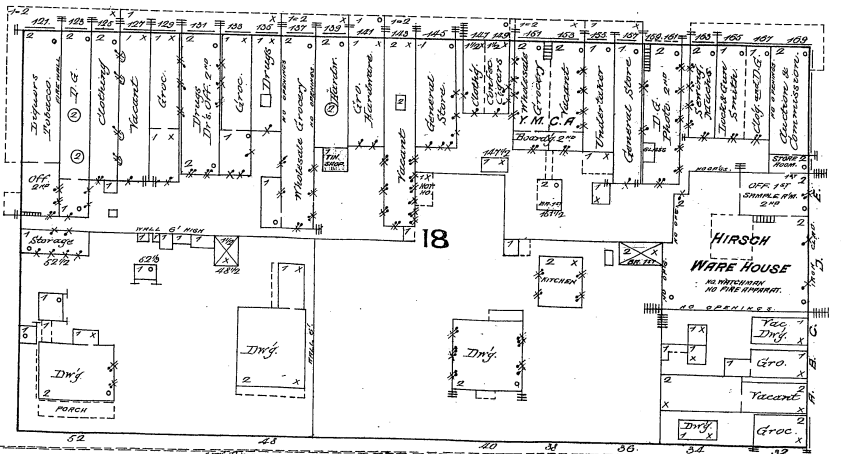
JACKSON



OGLETHORPE



BROAD



FRONT

NOTICE.—The SANBORN MAP & PUBLISHING CO. (Limited) will loan, to parties purchasing one copy of this map, a Duplicate, with the mutual understanding and agreement that it is to be used exclusively by their General or Local Agent and with the further agreement that, if not so used, one of the two copies will be returned to said Company.

No. 4.

SHEET

SEE

No. 10.

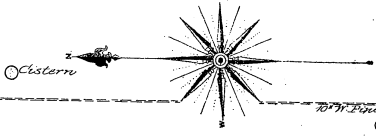
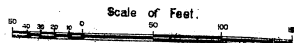
SHEET

SEE

No. 2.

SHEET

SEE



SEE FRONT SHEET

No. 10.

SEE