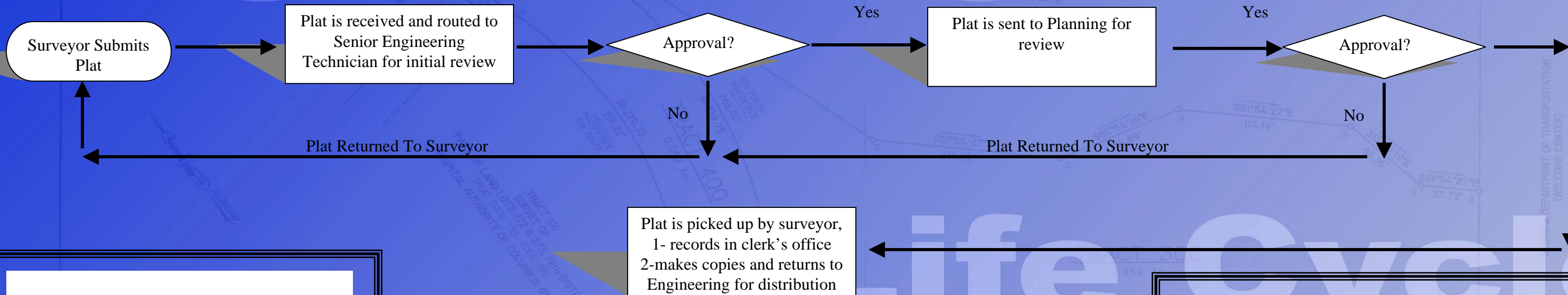
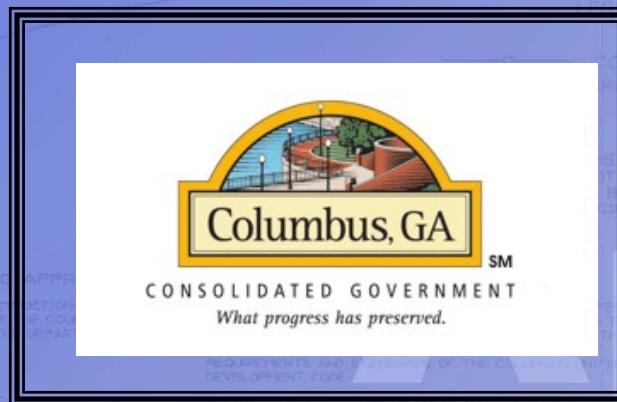
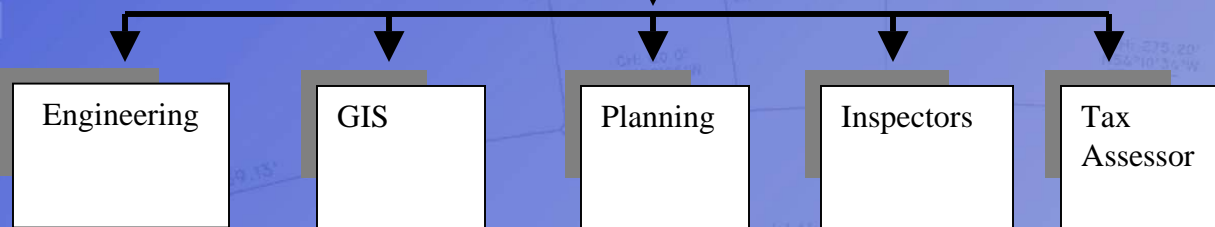


Lifecycle Of A Plat



Plat Requirements

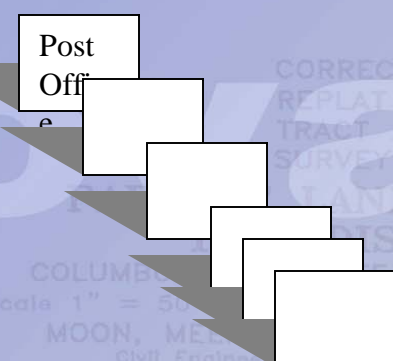
- 1
Standard Notes must be printed on all plats in the format show in the Diagram before submitting the plat for the approval of the Engineering Department.
- 2
The Surveyor must complete and sign the Surveyor Certificate on the plat before it can be submitted for the approval of the Engineering Department.
- 3
The Certificate For Final Plat Approval must be filled out and signed by the Planning Division before the plat can be submitted for approval by the Engineering Department.
- 4
The Certificate For Engineering Approval must be completed and signed by a City Engineer in the Engineering Department before the plat is official.
- 5
The Owners' Certificate must be completed and signed by the owner of the property before the plat is submitted for approval by the Engineering Department.
- 6
The Health Department Certificate/Certification areas must be completed and signed when there is no access to a Sanitary Sewer Line or where sanitary waste disposal is an issue.
- 7
A vicinity map is required on all plats and replats, where the location of the property cannot easily be determined.



GIS
Receives Plat from the Engineering Administrative Technician **only**
GIS Checks to be sure plat is STAMPED

GIS
Edits map

Send letters w/ PDF of parcel



Post Office
Southern Bell
Gas Co
Ga Power
Water Wks
Public Safety
Inspections
Planning
Tax Assessors