

In This Issue

- Click Here to visit our homepage and read back issues of the newsletter!
- Send us your comments or story ideas! Email to GIS Email
- Check Us out on Face Book!
- Check us out on Twitter!
- Columbus GIS



Shondra Hogan – CCG's Newest GISP!



What is a GISP?

A GISP is a certified geographic information systems (GIS) Professional who has a minimum of 4 years of professional GIS experience and meets standards for ethical conduct and professional practice and industry contributions, as established by the GIS Certification Institute (GISCI). These standards include education, ongoing training, experience
"Congratulations Shondra!"

Welcome to the GIS Division Newsletter! We hope to bring you news about our work and future projects. Let us hear from you.

Interview with Ron Smith, Deputy Director of Public Services



1. How long have you been using GIS?

Since it's beginning at the Columbus Consolidated Government. First in the Engineering Department and later while in Traffic Engineering and currently in Public Services.

2. Describe how GIS data and or systems is used in your department.

Rainwater Division uses GIS to investigate problems before we go into the field. For example, when a drainage complaint is received,

Rainwater personnel will locate the lot on GIS and most current aerial photograph, determine the existence of drainage easements and drainage structures in relation to the property and right of way lines. Armed with this information before visiting the site, we can formulate plans and begin to identify resources needed to solve the problem.

Special Enforcement Division uses the GIS to determine ownerships and mailing addresses of owners.

Forestry Division uses GIS to determine right of way widths and easements when making decisions on tree removal, tree trimming etc.

Waste Collection Division uses GIS to assist in developing and adjusting collection routes. We try to balance the routes where we collect waste so that each truck services the approximate same number of homes or businesses. GIS helps by determining the number of residences in a particular area.

GIS Trivia!

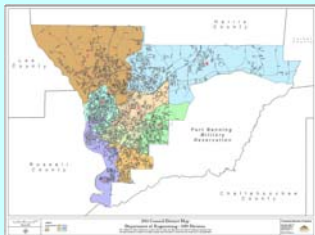
- 1) Who are the only 2 mayors that have streets named after them?
- 2) What spelling is correct? Forest Road or Forrest Road.
- 3) Who did GIS interview in last GIS Newsletter: Bill Rawn or Riley Land?
- 4) In what subdivision does every street have something to do with Ivy?
- 5) What is the largest residential subdivision in Columbus?

Did you know?

The Columbus street with the most addresses is Veterans Parkway (561)

1. Veterans Parkway - 561
2. Buena Vista Road - 449
3. 3rd Avenue - 432
4. 2nd Avenue - 399
5. Macon Road - 392

Council Districts



Click on Thumbnail to See Map

3. If GIS has improved something for your department, tell us how.

GIS has helped us to retrieve data more quickly. We can learn about the general details and often the cause of a problem before we ever see it on the ground. Knowing something about a problem before going to the field gives us an advantage in deciding what resources will be needed to solve the problem and even who needs to be on site during the investigation.

4. Tell us how your department performed the task(s) prior to utilizing GIS.

Before GIS we used paper copies of tax maps, made visits to the City Records Room or just visited the problem site without knowing what to expect. We still use Xerox copies of maps to mark the routes for our Sanitation Collection Drivers.

5. What would you like to see incorporated in GIS data or systems?

More access for end users with Windows friendly "point and click" icons to retrieve information.

6. What is your department's future plans with GIS?

Pinpoint System - There are programs on the market that would allow us to stop having predetermined waste collection routes for everything except household waste and recycling. If equipped with this technology, our trucks could press a button on a GPS receiver and identify additional waste for pick up. Data would be downloaded and process at the end of the day, Maps would be generated within GIS and given to waste collection drivers the following day identifying what waste needs to be picked up and where the waste is located. The trucks would go directly to the addresses identified, pick up the waste and move on to the next address identified. The ability to take advantage of this technology would save fuel, wear and tear on trucks and time.

Route Smart System – Route Smart would allow us to access and change existing routes easily so that routes do not become unbalanced. In other words we could make sure that each truck is picking up about the same amount of waste as all the rest of the trucks.

7. In what ways can GIS improve for your department?

We need more access to the data that GIS collects and we need more intensive training on retrieval of the data. I have divisions that do not have access to the needed level of GIS Data nor do they possess the training to access the data.

Columbus GIS Web Portal Newsletter

May, 2011

Using The GIS Map Catalog



The Map Catalog can be accessed by viewing the GIS Division homepage:

www.columbusga.org/gis

Now anyone with an internet connection via Wi-Fi, 3G, 4G or Modem has the ability to easily search, view and print production maps from the Columbus Consolidated Government's Geographic Information Systems (GIS) Division.

The Map Catalog includes but is not limited to:

- Location Maps
- Planning Maps
- Census Tract Map
- Tax Map Index
- Elections Maps
- City Streets Map

All of the maps in the Map Catalog are stored in the Portable Document Format (PDF) which requires either Adobe Acrobat or Adobe Acrobat Reader to view.

Explore the Columbus Consolidated Government's GIS Division homepage - to get started just click on the banner below!



Did You Know?

That Columbus was once the site of a Creek Indian Village and is one of the few cities in the United States to be planned before it's founding? For more about the History of Columbus go to:

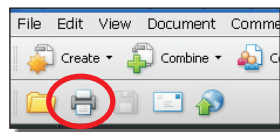
<http://www.columbusga.org/history/>

Here you will find over 40 different production maps that you may view or print free of charge.

Once you have found a map you are interested in viewing click on it's name to open the PDF.

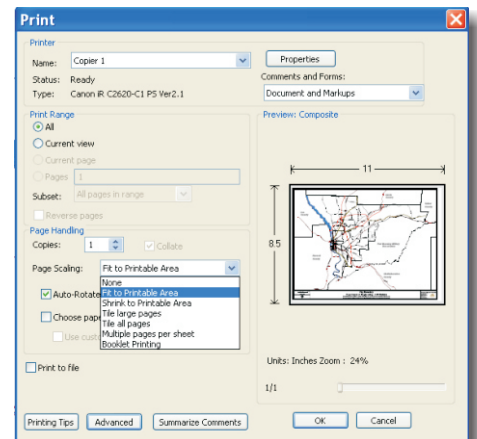
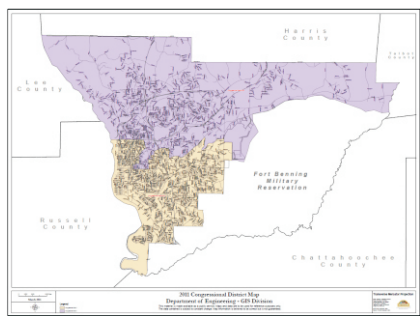
Printing Maps

To print the map your viewing, click on the 'Printer' icon

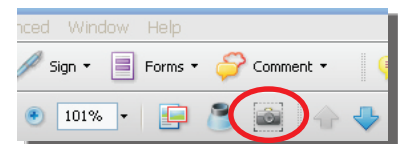


In the Print Dialog enter the name of your printer.

If the map is bigger than the size of the paper you are printing to click the drop down menu located beside "Page Scaling" and select 'Fit To Printable Area'.

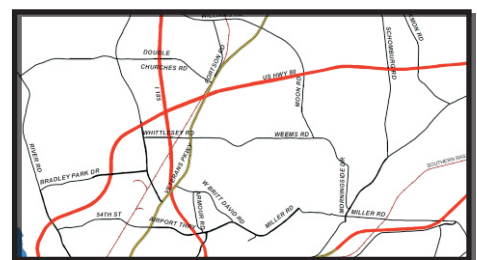


To print only a section of the map, begin by zooming in on the area you are interested in.



Using the 'Snapshot' tool click and drag around the area you wish to print.

From the 'File' menu choose 'Print' to print your selection.



Let Us Hear From You!

How do you use the GIS Portal? How can we improve it? Or do you just want to know how something works on the site - just put it down in an email and send it to:

[GIS Portal Newsletter Feedback](#)

