

In This Issue

- Click Here to visit our homepage and read back issues of the newsletter!
- Send us your comments or story ideas! Email to [GIS Email](#)
- Check Us out on Face Book!
- [GIS Face Book Page](#)



-Breaking News – -Jason Woods – CCG’s Newest GIS Team Member!

Jason comes from a CAD/Engineering background so he brings a lot of needed skills to our team. He will be responsible for our street centerline file, as well as traffic projects.

Jason has been working for the Traffic Division since 2009. He has previous surveying experience and is a great addition to our team.

“Welcome Aboard Jason!”



**Created and Edited by:
Elizabeth Brumfield & Darrell
Copeland**

Welcome to the GIS Division Newsletter! We hope to bring you news about our work and future projects. Let us hear from you.

Interview with Victoria Barrett, GIS Specialist, Columbus Water Works



How long have you been using GIS? **Seven years.**

Describe how GIS data and or systems is used in your department.

As a GIS Specialist, I use GIS applications in many ways. Our GIS Dept. maintains, analyzes and disseminates water and wastewater infrastructure information. We supply valuable information to end users such as the CWW Repair Crews, Managers, Locators, Engineers and the Fire Dept. We do so by distributing the GIS information through maps, field laptops, CWW Intranet and GPS units. We also provide a free public mapping service to our Customers for water and wastewater information.

If GIS has improved something for your department, tell us how.

GIS has improved our department and company in many ways. One particular way is through our ArcReader deployment on the laptops. Many of the field crews have laptops with them in the field during the day. While working in your front yard or in the middle of the street the field crews now have access to our GIS information. They have access to our GIS, scanned asbuilts and scanned intersections drawings on the laptops. This allows them to have better information at the tips of their fingers to better complete their jobs. I could go on and on but I will spare you the details!

Tell us how your department performed the task(s) prior to utilizing GIS. Before GIS, CWW was paper based. Asbuilts, intersection drawings, etc. were all on paper. Take the field crew I mentioned earlier that now uses laptops. Prior to the laptops they would carry large three ring binders in their back seats with intersection drawings or call downtown to the Engineering Dept. for more information.

What would you like to see incorporated in GIS data or systems? I would like to see a link between our GIS and the Fire Dept. hydrant database. That way we could see the hydrant inspection history.

What are your department’s future plans with GIS? One of our future goals is to integrate our GIS with Maximo, our CMMS (Computerized Maintenance Management System). The integration would allow us to relate a work order to a specific asset.

In what areas can GIS improve for your department? We are always striving to improve our GIS information and applications. We are working to correct speed issues and inaccurate attribute information.



Calculating & Measuring Area With The GIS Web Portal



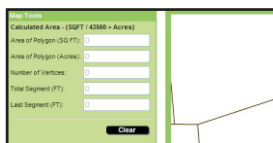
This issue we will look at how to calculate and measure area on the GIS Web Portal.

This feature is available at all viewing levels so you do not have to be a subscriber to use it.

Locate the parcel or area you are interested in measuring and then click on Calculate/Measure Area icon located at the on the toolbar above the map.

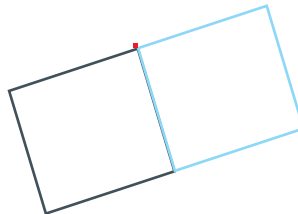


You will notice the pane to the left of the map has changed indicating that you have activated the tool.



Place the tip of your indicator arrow on any one point and

click it once, you will notice a tiny red dot appears. This dot is called a vertex.

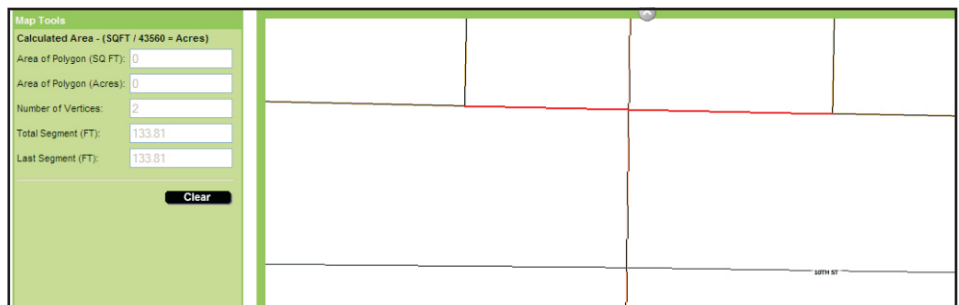
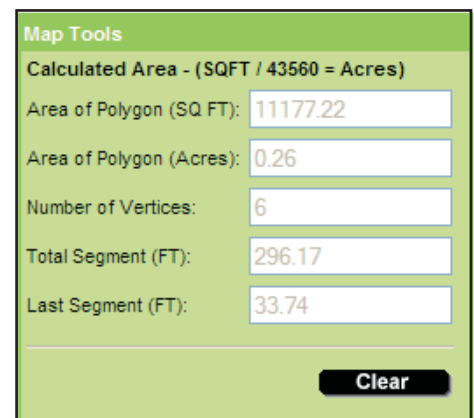


Continue to point and click on each of the remaining three corners of the polygon or until you have made your way around the area you wish to measure. If you make a mistake click on the clear button and start again.

Each time you create a new vertex you will notice that the Calculate Area window updates with the new measurement.

To illustrate how this tool works I have located parcel 100 001 001 using the Free Standard Viewer, (I choose this

viewer because it does not display parcel dimensions). I traversed around the parcel creating 6 vertices as I went along. Reviewing the results in the Calculate Area pane (recall this is located to the left of the map) I learn that the parcel in question is just over (0.26) a quarter of an acre in size. Using this same tool I can get a distance along any of the property lines or even a right of way measurement.



The Right of Way measurement for this section of Veterans Parkway is +/- 133.81 FT.



Did You Know?

That Columbus was founded in 1828 on the Chattahoochee River and today encompasses approximately 218 square miles of land?

For more about the History of Columbus go to:

<http://www.columbusga.org/history/>

Explore the Columbus Consolidated Government's GIS Division homepage - to get started just click on the banner below!

Let Us Hear From You!

How do you use the GIS Portal? How can we improve it? Or do you just want to know how something works on the site - just put it down in an email and send it to:

[GIS Portal Newsletter Feedback](#)

