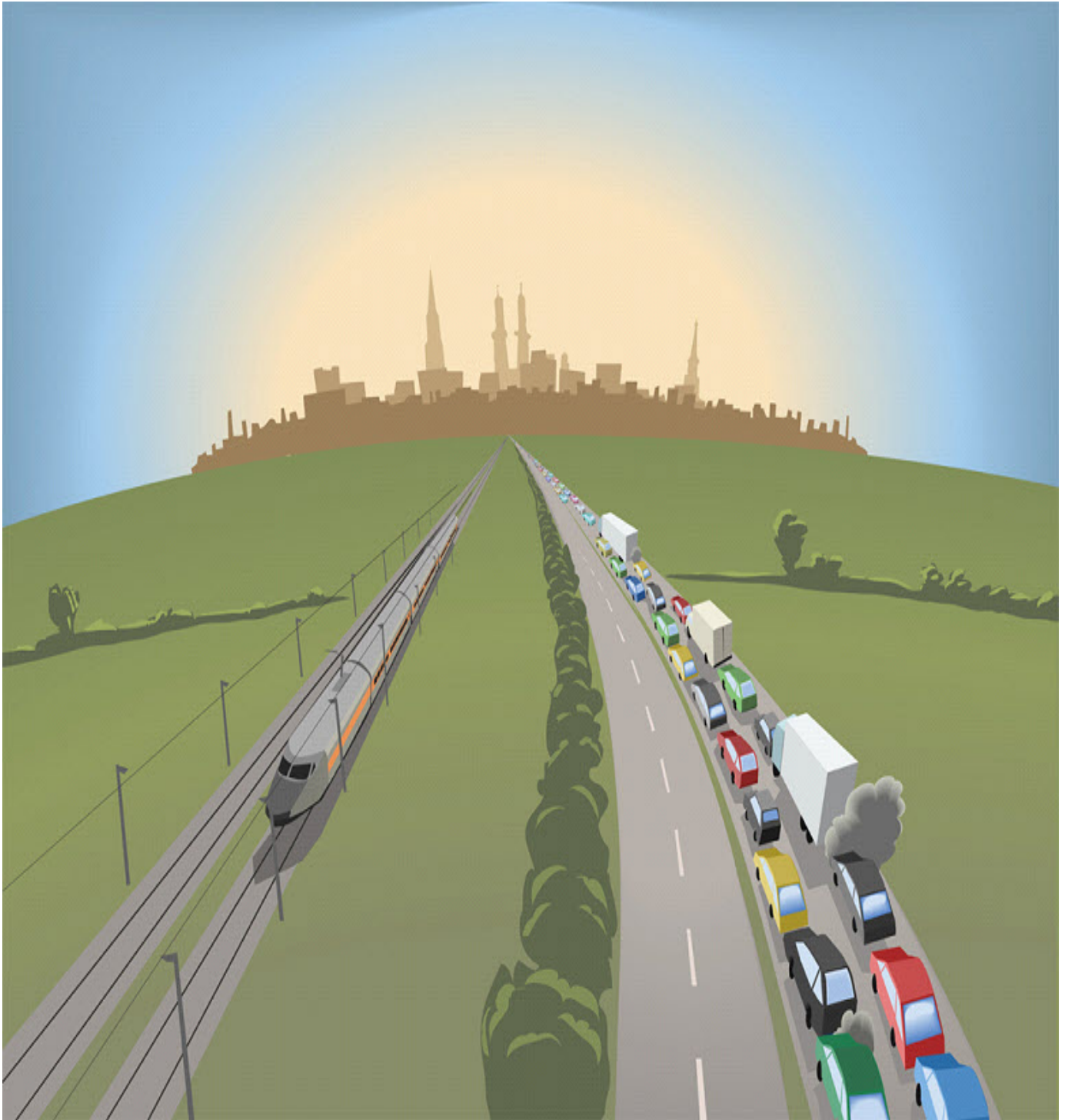


# 2035 LONG RANGE **TRANSPORTATION PLAN** **COLUMBUS-PHENIX CITY MPO**



# 2035 Columbus-Phenix City Long Range Transportation Plan (LRTP) Update

Prepared for the Columbus-Phenix City Metropolitan Planning Organization  
(C-PCMPO)

Prepared By: Columbus Planning Department  
Columbus, Georgia

Presented: December 17, 2009

## **2035 Columbus-Phenix City Long Range Transportation Plan Update**

**This document is available at:  
<http://www.columbusga.org/planning/>**

**For information regarding this document, please contact:**

Rush Wickes, AICP, PTP, FCPP  
Transportation Planner  
Columbus Planning Department  
420 10th Street  
PO Box 1340  
Columbus, Georgia 31902  
Phone: (706) 225-3937  
Fax: (706) 653-4534  
E-mail: [rwickes@columbusga.org](mailto:rwickes@columbusga.org)

### DISCLAIMER:

This report was prepared as a cooperative effort of the U.S. Department of Transportation (USDOT), Federal Highway Administration (FHWA), Georgia Department of Transportation (GDOT), Alabama Department of Transportation (ALDOT) and the Columbus-Phenix City Metropolitan Planning Organization (C-PCMPO) as a requirement of Title 23, USC 134, 135, and subsequent modifications under Public Law 109-59, SAFETEA-LU, August 10, 2005. The contents of this document do not necessarily reflect the official views or policy of the U.S. Department of Transportation.

The preparation of this report has been financed in part through grant[s] from the Federal Highway Administration and the Federal Transit Administration, U.S. Department of Transportation, under the State Planning and Research Program, Section 505 [or Metropolitan Planning Program, Section 104(f)] of Title 23, U.S. Code.

**COLUMBUS-PHENIX CITY TRANSPORTATION STUDY  
POLICY COMMITTEE**

**A RESOLUTION**

**A Resolution Adopting the final version of the 2035 Long Range Transportation Plan (LRTP) for the Columbus-Phenix City Metropolitan Planning Area.**

**WHEREAS** the Governors of Georgia and Alabama have designated the Columbus Planning Department as the Metropolitan Planning Organization (MPO) for the Columbus-Phenix City (C-PCTS) urban area; and

**WHEREAS**, the Columbus-Phenix City Metropolitan Planning Organization (MPO) is required by the Federal Highway Administration and SAFETEA-LU to prepare an update every five years to the Long Range Transportation Plan that considers transportation needs for the region for a 25 year period;

**WHEREAS**, the Columbus-Phenix City Metropolitan Planning Organization (MPO), having last developed the 2030 Long Range Transportation Plan in 2004, now has submitted this final version of the 2035 Long Range Transportation Plan document to the Georgia Department of Transportation, the Alabama Department of Transportation and the Federal Highway Administration for review; and

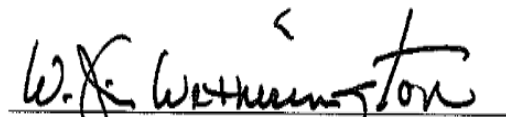
**WHEREAS**, a public comment period seeking public input to the draft version of the 2035 Long Range Transportation Plan was conducted for one month between November 2<sup>nd</sup> and December 2<sup>nd</sup> of this year;

**WHEREAS**, based on the comments received from the public, the Georgia Department of Transportation, the Alabama Department of Transportation and the Federal Highway Administration, some modifications were applied to this, the final version of the 2035 Long Range Transportation Plan document;

**WHEREAS** it is necessary to adopt the final version of the 2035 Long Range Transportation Plan as a necessary update to the regional transportation planning process and to enable the official review process to proceed.

**NOW THEREFORE BE IT RESOLVED** that the Columbus-Phenix City Transportation Study Policy Committee approve the endorsement of the final version of the 2035 Long Range Transportation Plan; and

Resolved this 18th day of December, 2009

  
\_\_\_\_\_  
Mayor James Wetherington, Chairman

Columbus-Phenix City Transportation Study Policy Committee

**Columbus-Phenix City  
Metropolitan Planning Organization (C-PCMPO)**

**MPO and Advisory Membership  
FY 2009**

MPO Policy Coordinating Committee:

Jim Wetherington, Chair,	Mayor, City of Columbus
Sonny Coulter,	Mayor, City of Phenix City
Rick Jones, AICP	Director of Planning Columbus Consolidated Government
Mervin Dudley	Chair, Russell County Commission
Anne-Marie Turner	Chair, C-PCMPO Citizens Advisory Committee
Major General Michael Ferriter	Commander, U.S. Army - Fort Benning
Vance Smith	Commissioner, Georgia Department of Transportation
Sam Wellborn	Georgia State Transportation Board
DeJarvis Leonard	Division Engineer, Alabama Department of Transportation Fourth Division
Advisory:	
David Millen	Pre-Construction Engineer Georgia Department of Transportation
Mark Bartlett	Division Administrator for Alabama, Federal Highway Administration
Rodney Barry	Division Administrator for Georgia, Federal Highway Administration
Robert J. Jilla, PE,	Bureau Chief Transportation Planning and Modal Programs, Alabama Department of Transportation
Cindy Van Dyke	Office of Planning, Georgia Department of Transportation

Technical Advisory Committee

Rick Jones, AICP	Director of Planning, Columbus Consolidated Government
Felton Grant,	Transportation Planning Coordinator Columbus Consolidated Government
Dave Cox,	Transportation Planning Engineer Georgia Department of Transportation
David Millen,	Pre-Construction Engineer Georgia Department of Transportation
Angel Moore, PE	City Engineer, Phenix City
Ken Cush	Traffic Engineer, Alabama Department of Transportation, Fourth Division
Patti Cullen,	Director, River Valley Regional Commission
Ron Hamlett	Traffic Engineer, Columbus Consolidated Government
Steve Haynes	Assistant Engineer, Alabama Department of Transportation, Fourth Division
Larry Kite,	Engineer, Russell County
Neal Hall,	Engineer, Lee County
Wallace Hunter,	City Manager, City of Phenix City
Kenneth Holloway	Chief of Master Planning, U.S. Army - Fort Benning
Saundra Hunter	Director METRA Transit System, Columbus
Mark Oropeza,	Director, Columbus Metropolitan Airport
Dr. Emmanuel C. Oranika	Metropolitan Planning Engineer Alabama Department of Transportation
Advisory:	
Andy Edwards	Intermodal Planning Engineer, Federal Highway Administration, Georgia Division
Cornelius Davis	Intermodal Planning Engineer, Federal Highway Administration, Georgia Division
Suzanne Burnette	Executive Director, Lee-Russell Council of Governments
Wayne Pittman	Area Engineer, Georgia Department of Transportation
Robert J. Jilla, PE	Bureau Chief, Transportation Planning and Modal Programs, Alabama Department of Transportation
Anne-Marie Turner	Chair, Citizens Advisory Committee, C-PCMPO
DeJarvis Leonard	Division Engineer, Alabama Department of Transportation, Fourth Division
David Harris	Planning and Right of Way Program Manager, Federal Highway Administration, Alabama Division

<u>Citizens Advisory Committee</u>	
Anne-Marie Turner, Chair	Columbus
Doug Jefcoat, Vice Chair	Columbus
Becky Carter	Columbus
Patrick McHenry	Columbus
Teresa Tomlinson	Columbus
Jim Pound	Columbus
Jeremy Scott Hobbs	Columbus
Becky Carter,	Columbus
Sally Bork Lasseter	Columbus
John Woodward	Columbus
James Davis	Phenix City
Advisory:	
Rick Jones, AICP	Director of Planning, Columbus Consolidated Government
Nell Johnson, METRA	METRA System, Columbus
Ronald Johnson	Transportation Division Fort Benning
Myles Caggins	Muscogee County School District

**Table of Contents**

<b>Title, Contacts and Disclaimer</b>	i-ii
Resolution	iii
MPO And Advisory Committee Membership	iv-vi
Table of Contents	vii
List of Tables	xi
List of Maps	xiii
List of Figures	xiv
<b>Chapter I - Introduction</b>	<b>1</b>
1.1 Background	1
1.2 Other Regional Planning Studies and Regulations	2
1.3 Study Purpose/LRTP Study Process	3
1.4 Establishing Goals and Objectives	3
1.5 Data Collection	3
1.6 Existing and Future Conditions Evaluation	5
1.7 Transportation Systems Improvements	5
1.8 Proposed Improvements Analysis	5
1.9 Project Prioritization	6
1.10 Public Participation	6
1.11 TCC 2035 LRTP Update Subcommittee	6
1.12 Project Database	7
1.13 Project Newsletter	7
1.14 Project Brochures	7
1.15 Bilingual Advertisements	7
1.16 Media Outreach	7
<b>Chapter II - Goals and Objectives</b>	<b>10</b>
2.1 Long Range Plan Development	10
2.2 Long Range Transportation Planning Factors	12
2.3 Statement of Consistency of Long Range Transportation Plan with Other Plans	14
<b>Chapter III - Socio-economic Data</b>	<b>15</b>
3.1 Base Year Trends	15
3.2 Population	15
3.3 Housing and Household Characteristics	18
3.4 Employment Statistics and Projections	20
3.5 Area Wide Projections	22
3.6 Population and Employment Density Maps	24

<b>Chapter IV - Land Use</b>	<b>29</b>
4.1 Population	29
4.2 Growth Scenarios	30
4.3 Columbus Comprehensive Plan	30
4.4 Current Columbus Land Uses	31
4.5 Character Areas	33
4.6 Columbus Planning Districts	33
4.7 Transportation Policies in Columbus	45
4.8 Traffic Circulation and Transportation	45
4.9 Mass Transit	45
4.10 Planning District Policy Objectives and Recommendations	46
4.11 Cusseta-Chattahoochee County	47
4.12 Current Land Uses in Cusseta-Chattahoochee County	47
4.13 Historic Districts and Landmarks in Columbus	50
4.14 Phenix City Comprehensive Plan	52
4.15 Current Land Uses in Phenix City	52
4.16 Downtown Phenix City	53
4.17 Commercial and Office/Commercial Development in Phenix City	53
4.18 Industrial Development in Phenix City	54
4.19 Downtown Phenix City Redevelopment Plan	56
4.20 Phenix City Land Use Policies Relating Directly to Transportation	56
4.21 Guiding Principles and Future Land Uses for Phenix City	57
4.22 Land Use and Development in Russell County	59
4.23 Land Use and Development in Lee County	59
4.24 Conclusion	59
<b>Chapter V - Transportation Needs</b>	<b>61</b>
5.1 Roads and Bridges Classification	61
5.2 Safety Analysis	66
5.3 Collision Severity	67
5.4 Highway Strategic Safety Plans	70
5.5 Congestion Management Process	70
5.6 Traffic Count Collection/Analysis	72
5.7 Regional Travel Demand Model	72
5.8 Components of the Travel Demand Model	75
5.9 Travel Demand Model Results	75
5.10 Bridge Conditions	82
5.11 Federal Highway Bridge Replacement and Rehabilitation Program	83
5.12 Railroad Grade Crossings Evaluation	85

<b>Section B - Public Transportation</b>	<b>87</b>
5.13 Transit System Purpose/Justification	87
5.14 Multimodal Needs	87
5.15 Challenges to Regional Public Transit	87
5.16 Description of Existing Conditions and Commuting Patterns	88
5.17 Phenix City Express (PEX) and Lee-Russell Public Transit (LRPT)	93
5.18 Future Needs for Regional Transit	94
5.19 Funding Needs for Regional Transit	96
5.20 Multimodal Planning	97
5.21 Summary of Transit Needs	97
5.22 Requirements for New Development	97
5.23 Criteria/Standards for Establishing Transit Service	98
5.24 Transit Fleet Management and Improvements	99
5.25 Provision for New Service Options	99
5.26 Proposed Investment Strategies and Recommendations	100
<b>Section C - Bicycle and Pedestrian Initiatives</b>	<b>102</b>
5.27 Purpose and Justification	102
5.28 Consideration of Bicycle and Pedestrian Access on Proposed Facilities	102
5.29 Existing Bicycle and Pedestrian Plans in Georgia Region of C-PCMPO	103
5.30 Bicycle and Pedestrian Connectivity in Phenix City Comprehensive Plan	105
5.31 Georgia Statewide Bicycle Plan and Network	105
5.32 Bicycle and Pedestrian Facility Placement Considerations	107
5.33 The Pedestrian Project Prioritization Framework	108
5.34 C-PCMPO Actions Recommended for Bicycle and Pedestrian Issues	110
5.35 Ways to Better Enable Non-Vehicular Transportation Options	110
<b>Section D - Other Modes</b>	<b>113</b>
5.36 Purpose and Justification	113
5.37 Existing Conditions and Future Developments	113
<b>Section E - Freight and Goods Movement</b>	<b>115</b>
5.38 Purpose and Justification	115
5.39 Description of Existing Conditions and Future Developments	115
5.40 Freight Analysis Framework	122
5.41 Railroads - Crossings and Intermodal Yards	125
5.42 Proposed Investment Strategies and Recommendations	126
<b>Chapter VI - Project Considerations</b>	<b>127</b>
6.1 Environmental Justice and Title VI	127
6.2 2035 LRTP Update and Outreach Efforts	128
6.3 Columbus-Phenix City Metropolitan Area EJ Populations	128
6.4 Environmental Justice Criteria and Mapping	130
6.5 Americans with Disabilities Act	146
6.6 Conclusion	146

<b>Chapter VII - Plan Recommendations</b>	<b>147</b>
7.1 Project Prioritization	147
7.2 Planning Factors	147
7.3 Safety Factors	148
7.4 Roadways / Facility Design / Crash Analysis / Data	149
7.5 Pedestrians / Bicycle / Transit / Schools	149
7.6 Proposed Major Projects	151
<b>Chapter VIII - Air Quality</b>	<b>194</b>
8.1 Purpose and Justification	194
8.2 Air Quality Analysis	194
8.3 Statement on Greenhouse Gases	195
8.4 Environmental Mitigation and Consultation Resources	196
<b>Appendix A - Public Involvement</b>	<b>198</b>
A.1 First Round of Public LRTP Open House Meeting Dates	198
A.2 Second Round of Public LRTP Open House Meeting Dates	199
A.3 Minutes from First Meeting of LRTP Stakeholders	200
A.4 Minutes from Second Meeting of LRTP Stakeholders	203
A.5 Minutes from Second Round LRTP Stakeholders Meeting	205
A.6 Results of 2035 LRTP Public Survey	207
A.7 Public Comments Received Concerning Draft LRTP	218
<b>Appendix B - Traffic Model Development</b>	<b>225</b>
B.1 Travel Demand Forecasting Model	225
B.2 Trip Generation Process	228
B.3 Socioeconomic Data	229
B.4 Household Stratification Model	230
B.5 Trip Production	234
B.6 Attraction Sub-model	235
B.7 External-External Trips	238
B.8 Trip Distribution	238
<b>Appendix C - Methods and Assumptions</b>	<b>240</b>
C.1 Introduction	240
C.2 Baseline Socio-economic Data	240
C.3 School Enrollment Projections	241
C.4 Median Income Projections	241
C.5 Population Projections	241

<b><u>Index of Tables</u></b>	
Table 1-1 - Data Collection Summary, Category Data Resources	4
Table 1-2 - 2035 LRTP Update Subcommittee Membership	6
Table 1-3 - Focus Group Meeting Participants - Meeting 1, June 2, 2009	8
Table 1-4 - Focus Group Meeting Participants - Meeting 2, June 4, 2009	8
Table 1-5 - Listing of Individuals and Organizations Invited to Participate in LRTP Stakeholders Meetings	9
Table 2-1 - Goals and Strategies - 2030 Long Range Transportation Plan	11
Table 2-2 - Goals and Strategies - 2035 Long Range Transportation Plan	13
Table 3-1 - Population by County in the C-PCMPO (1990 to 2008)	15
Table 3-2 - Aging (65+) Population Statistics for the C-PCMPO Area	17
Table 3-3 - Occupied Housing Stock and Median Income by C-PCMPO County - 1990 and 2000	17
Table 3-4 - Labor Distribution By Sector - 2000 to 2040	20
Table 3-5 - Top Twenty-Five Major Employers within Columbus	20
Table 3-6 - Top Ten Major Employers within Phenix City	20
Table 3-7 - Projected Population and Housing Increases in C-PCMPO Study Area	22
Table 3-8 - Employment Forecasts Per MPO County 2000-2040	23
Table 4-1 - Historical Population Growth for Counties in the C-PCMPO Area	29
Table 4-2 - Columbus Planning District Future Strategies	37
Table 4-3 - Character Areas	50
Table 5A-1 - Collision Statistics by County in the C-PCMPO 2006 to 2008	66
Table 5A-2 - Top 10 Intersections in Columbus for Vehicle Collisions - 2006 to 2008	68
Table 5A-3 - Ranking of Intersections in Columbus By Crash Severity - 2006 to 2008	68
Table 5A-4 - Top 10 Intersections in Phenix City for Vehicle Collisions - 2006 to 2008	69
Table 5A-5 - Ranking of Intersections in Phenix City by Crash Severity - 2006 to 2008	69
Table 5A-6 - Routes Measured in 2009 Congestion Management Process	71
Table 5A-7 - Findings of 2009 Congestion Management Process - AM/PM Rush Hour Results	72
Table 5A-8 - Columbus-Phenix City Traffic Model Results	76
Table 5A-9 - Rating System for Evaluating Bridge Sufficiency	82
Table 5A-10 - Listing of Bridges With Lowest Sufficiency Ratings in the C-PCMPO Area	84
Table 5A-11 - C-PCMPO Region - Railroad Crossings Ranked by Collision Probability Ratings	86
Table 5B-1 - Schedule and Fares for Area Transit Systems	92
Table 5C-1 - Georgia Department of Transportation Bicycle and Pedestrian Programs - Evaluation Criteria for Pedestrian Facility Design	109
Table 5D-1 - Phenix City Dock Statistics	113
Table 5D-2 - Port of Columbus Statistics	114
Table 5D-3 - Columbus Metropolitan Airport Inventory And Flight Statistics	114
Table 5E-1 - Columbus Metropolitan Airport Air Cargo Forecast	120

C-PCMPO 2035 LONG RANGE TRANSPORTATION PLAN

Table 6-1 - U.S. Census Bureau - Federal Ethnicity and Race Definitions	129
Table 6-2 - Estimated EJ Demographic Statistics for Year 2008	130
Table 7-1 - SAFETEA-LU Planning Factors	148
Table 7-2 - Criteria for LRTP Project Prioritization	150
Table 7-3 - Suggested Transportation Studies	151
Table 7-4 - 2035 Long Range Transportation Plan Major Projects	153
Table 7-5 - 2035 Long Range Transportation Plan Major Projects with Inflation Factors Applied	159
Table B-1 - C-PCMPO 2000 CTPP Household Size Distribution	231
Table B-2 - C-PCMPO 2000 CTPP Median Household Income	232
Table B-3 - Household Size/Income/Auto Ownership Distribution	233
Table B-4 - Trip Generation Rates	234
Table B-5 - C-PCMPO Model External Station Data	236
Table B-6 - C-PCMPO Terminal Time Criteria	238
Table B-7 - Average Vehicle Travel Times in Various Networks of Traffic Model	239

<b><u>Index of Maps</u></b>	
Map 3-4 - Columbus-Phenix City Transportation Study - 2006 Zonal Employment Distribution	25
Map 3-5 - Columbus-Phenix City Transportation Study - 2035 Zonal Employment Distribution	26
Map 3-6 - Columbus-Phenix City Transportation Study - 2006 Zonal Population Distribution	27
Map 3-7 - Columbus-Phenix City Transportation Study - 2035 Population Distribution (Per Zone)	28
Map 4-1 - Columbus Planning Districts	35
Map 4-2 - Columbus Existing Land Use Map	36
Map 4-3 - Columbus Future Land Use Map	38
Map 4-4 - Future Land Use - Planning Area A - Northwest Columbus	39
Map 4-5 - Future Land Use - Planning Area B - Panhandle	40
Map 4-6 - Future Land Use - Planning Area C - Columbus South	41
Map 4-7 - Future Land Use - Planning Area D - Midtown/Uptown	42
Map 4-8 - Future Land Use - Planning Area E - Southeast Columbus	43
Map 4-9 - Future Land Use - Planning Area F - Bibb City/Bellwood/North Highland	44
Map 4-10- Chattahoochee County - Existing Land Use Map	48
Map 4-11 - Chattahoochee County - Future Land Use Map	49
Map 4-12 - Phenix City Existing Land Use Map	55
Map 4-13 - Major Land Use Recommendations Made for Phenix City	58
Map 5A-1 - Functional Classification Map for Muscogee County	63
Map 5A-2 - Functional Classification Map for Phenix City Region	64
Map 5A-3 - Functional Classification Map for Chattahoochee County	65
Map 5A-4 - Roads Measured in Congestion Management Process with Peak PM Hour Congestion Levels Indicated	73
Map 5A-5 - Columbus-Phenix City Transportation Study - 2006 Base Year Network Traffic Model	78
Map 5A-6 - Columbus-Phenix City Transportation Study - 2035 "No Build" Loaded Network Traffic Model	79
Map 5A-7 - Columbus-Phenix City Transportation Study- 2035 Programmed Long Range Transportation Plan Loaded Network	80
Map 5A-8 - Columbus-Phenix City Transportation Study - 2035 Unconstrained Long Range Transportation Plan Loaded Network	81
Map 5B-1 - METRA System Map	89
Map 5B-2 - PEX Public Transit Routes	90
Map 5B-3 - Lee Russell Public Transit - Russell Metro Connection Service Days	91
Map 5B-4 - C-PCMPO Regional Transit Service Objectives	94
Map 5C-1 - Bicycle Paths, Sidewalks and School Locations	104
Map 5C-2 - Georgia Department of Transportation Designated Statewide Bicycle Route Network	106
Map 5E-1 - Primary Freight and Goods Movement Corridors in the C-PCMPO Region	116
Map 5E-2 - Diagram of Columbus Metropolitan Airport - Facilities and Runways	119
Map 5E-3 - 2002 Freight Volume - Volume to Capacity Projections	123
Map 5E-4 - 2035 Freight Volume - Volume to Capacity Projections	124
Map 6-1 - Aged 65 + in C-PCMPO Four County Region	132
Map 6-2 - Asian Population in C-PCMPO Four County Region	134
Map 6-3 - Percentage of Population Identifying as African-American in C-PCMPO Four County Region	136

<b><u>Index of Maps continued</u></b>	
Map 6-4 - African-American Population Greater than 50% in C-PCMPO Four County Region	137
Map 6-5 - Hispanic Population Percentages in C-PCMPO Four County Region	139
Map 6-6 - Non-White Population Percentages in C-PCMPO Four County Region	141
Map 6-7 - Low Income Population in C-PCMPO	143
Map 6-8 - "Some Other Race" Population in C-PCMPO Four County Region	145
Map B-1 - C-PCMPO Network Facility Type	227
Map B-2 - C-PCMPO Network - Traffic Analysis Zones (TAZ) Boundaries	230
Map C-1 - Population Allocation for C-PCMPO in Modeling Process	242
<b><u>Index of Figures</u></b>	
Figure 3-1 - Population Growth By Entity 2000 to 2008	16
Figure 3-2 - Age 65 Plus Population Distribution Among C-PCMPO Counties	17
Figure 3-3 - Percentage of Housing Units in C-PCMPO in County	19